

Roseneath ORGANICS

Totally Natural Products That Work ... *Naturally*



PRODUCT MANUAL

18 DECEMBER 2013

WWW.ROSENEATHORGANICS.COM



Roseneath Organics Pty Ltd

238A Kangaroo Reef Road
Mylor South Australia 5153

fax/ph - (08) 8388 1106
mobile - 0419 213 157

email - roseneath@mail.com
web - www.roseneathorganics.com

Roseneath Organics Farm is
Certified Organic BioDynamic with NASAA
Our membership number is NASAA # 5300

!!!! PLEASE NOTE !!!!

The information contained in this document is NOT intended to be a substitute for the advice of a professional medical doctor, clinician, herbalist or naturopath.

The information in this document is constantly being expanded and revised.
Roseneath Organics reserves the right to alter this document without consent.

The contents of this document, both text and graphic, may NOT be reproduced and/or transmitted electronically, by any means whatsoever, in whole or in part, without the express written consent of Roseneath Organics Pty Ltd.

Roseneath Organics has grown steadily following its conception in 1997

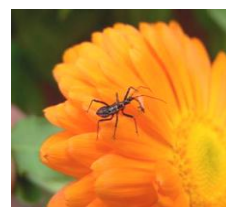
A **healing herbal philosophy** was born out of a personal sickness, an eclectic blend of unpleasant doctor experiences, an urgent need to resolve personal health problems and the passion to make **affordable all-natural products that work ... Naturally.**

Roseneath Organics combines **modern peer reviewed medical research** with old fashioned **herbal folklore**, as passed down to us over millennia by wise persons, sages and mystics.

At Roseneath we are keen to grow all of the plant material used to make our formulations. We are **bio-organic** growers and have a keen desire to promote the **sustainable** use of the sanctuary we all share.

Our herb farm is currently certified organic bio-dynamic with **NASAA**. We are certified for **organic herb production** as well as blue gums for the production of eucalyptus essential oil.

With our **passionate desire** for sustainability also exists the **in-house skills** and **ingenuity** to utilise the **extensive natural bio-diversity** that exists **abundantly** within and around us.



In 'days gone by' most medicines and healing agents were extracted naturally from plants and other materials directly. Extraction was performed by distillation, direct juicing or by infusion in water, oils, alcohol and fats.

Now most pharmaceuticals can, and are, being artificially mass synthesized in industrial laboratories. These new artificially contrived copies of natural compounds are very often not chemically, nor structurally, the same as the original plant compounds.

The differences between natural plant derived and artificial compounds comes about because often the cost of reproducing an exact copy of the natural substance is prohibitive or simply because skilled pharmaceutical chemists don't know how to artificially synthesize nature's gifts !

In some cases the imperfect artificial copies are quite hazardous and toxic when used alone as single dose pharmaceuticals. Many of these synthetic pharmaceuticals also have shocking side effects and debilitating long term health consequences.

It is staggering to think that approximately 50% of current human pharmaceuticals are based on chemically manipulated, patentable synthetics or upon artificially created and imperfect copies of natural plant substances ! Why can't we just use the plants gifts in their natural state ?

Unfortunately the consumer is too often the experimental laboratory rat of powerful political and social manipulations, collective and corporate greed, immoral marketing practices and the hazy dreams of multi-national controlled research scientists.



All Roseneath Organics products are made by hand using safe edible organic plant fats, vegetable oils and gums, unrefined bees wax, apple cider vinegar, high purity natural essential oils, absolute grain derived ethanol, clean rainwater, organically grown herbs and wild plant material.

In an attempt to achieve excellence, Roseneath formulations are based upon both traditional recipes and peer reviewed modern research.

Wherever possible, the ingredients in all Roseneath Organics products are derived from organically cultivated plants grown sustainably using biodynamic farming practices.

Roseneath products are tested on people and not on animals.



It is our mission at Roseneath Organics to offer products that

- ... provide rapid and long term relief for people in serious suffering.
- ... work effectively, with minimum fuss, allowing individuals to self-manage a real health problem over an extended time period without ill-effect.
- ... can aid and assist the body to repair itself naturally using the power of the immune system and by stimulating the natural healing process.
- ... are made using high quality organic and/or carefully selected wild-crafted plant material.
- ... help promote the fantastic wealth of effective natural healing and medicinal knowledge passed down to us over many millennia by wise sages, healers, medicine men, herbalists, doctors, alchemists, mystics, shaman and common folk.
- ... are sustainably produced and prepared in an ecologically sensitive manner.
- ... honour the Earth.

Adam Voysey
Owner and Founder



Tissue Injury and Massage Products

Slow Release Rub
FAST Acting Spray
Deep Relief Oil
Body Oil
Matern Oil
Teeth Relief Gel

Calendula Products

Calendula Oil
Calendula Lotion
Calendula Ointment
Calendula Cream
Calendula Orange and Cedarwood Ointment
Calendula Foaming Wash

Body Care Products

Replace
Retinox
Skin Feast
Rosemary and Lavender Cream
Scar Serum Oil
Scar Serum Fruit
CoQ10 Cell Renew Spray
Soft Face Wash
Refresh Toner Cleanser
ACE Paste
Dream State Insomnia Spray

Melissa Products

Lemonbalm Tea Tree and Eucalyptus Ointment
Cold Sore Salve
All Natural Head Lice Lotion
Melissa Oil

Tonic Products

Olive Leaf Extract Mandarin
Olive Leaf Extract Natural Double
Strength
Happy Tummy Tonic
Blood Clear Tonic
Cats Claw Extract

Personal Products

GLIDE Personal Lubricant

Equine Products

Olive Horse Immuno-Digestive Tonic
Mobility Tissue Repair Supplement
Analgesic Wound Gel

Table of Contents

PRODUCT USAGE NOTES.....	7
PRODUCT APPLICATION GUIDE.....	12
PRODUCT TRIALS.....	14
REPORT THE EFFICACY OF TWO HEAD LICE TREATMENTS FLINDERS UNIVERSITY 2006	15
REPORT LEMONBALM TRIAL WESLEY HOUSE NURSING HOME 2006	15
REPORT MELISSA OIL FOR BEHAVIOUR MANAGEMENT 2010	16
REPORT BAROSSA VILLAGE RESIDENCY MELISSA OIL TRIAL 2011	17
TISSUE INJURY AND MASSAGE PRODUCTS.....	19
SLOW RELEASE RUB 100GM AND 500GM	22
FAST ACTING SPRAY 125ML AND 500ML.....	23
DEEP RELIEF OIL 50ML AND 500ML	24
BODY OIL FOR MASSAGE 125ML AND 500ML	25
MATERN OIL 125ML	26
TEETH RELIEF GEL 50ML.....	27
TISSUE INJURY AND MASSAGE PRODUCT TESTIMONIALS.....	28
CALENDULA PRODUCTS	31
CALENDULA OIL 125ML	33
CALENDULA LOTION 125ML AND 500ML.....	34
CALENDULA OINTMENT 50GM	35
CALENDULA CREAM 100GM.....	36
CALENDULA ORANGE AND CEDARWOOD SOOTHING OINTMENT 50GM.....	37
CALENDULA FOAMING WASH 150ML	38
CALENDULA PRODUCT TESTIMONIALS	39
MELISSA PRODUCTS	40
MELISSA OIL 125ML.....	41
COLD SORE SALVE 20GM.....	42
LEMONBALM TEA TREE AND EUCALYPTUS HEALING OINTMENT 50GM	43
ALL NATURAL HEAD LICE LOTION 125ML AND 500ML	44
MELISSA PRODUCT TESTIMONIALS.....	45
TONIC PRODUCTS.....	49
OLIVE LEAF EXTRACT MANDARIN 200ML AND 500ML	51
OLIVE LEAF EXTRACT NAT DOUBLE STRENGTH 500ML	52
HAPPY TUMMY TONIC 200ML AND 500ML	53
BLOOD CLEAR TONIC 200ML	55
CATS CLAW EXTRACT 500ML.....	56
TONIC PRODUCT TESTIMONIALS	57
BODY CARE PRODUCTS	58
REPLACE DEEP FEED CREAM GEL 125ML	60
RETINOX EYE FACE MOISTURISER 125ML	61
SKIN FEAST MOISTURISER 250ML	62
ROSEMARY AND LAVENDER CREAM 90GM	63
SCAR SERUM OIL 50ML	64
SCAR SERUM FRUIT 50ML	65
COQ10 MIST SPRAY 50ML	66
SOFT FACE WASH 250ML	67
REFRESH TONER CLEANSER 250ML.....	68
ACE PASTE 150GM	69
DREAM STATE INSOMNIA SPRAY 50ML	70
BODY CARE PRODUCT TESTIMONIALS.....	71
PERSONAL PRODUCTS	73
GLIDE PERSONAL LUBRICANT 125ML	74
OLIVE HORSE IMMUNO DIGESTIVE SUPPORT 500ML	76
MOBILITY TISSUE REPAIR SUPPLEMENT 100 & 500GM.....	77
ANALGESIC WOUND GEL 125ML	79
EQUINE SHIELD PRODUCT TESTIMONIALS.....	80

Product Usage Notes

Analgesic Wound Gel

If bleeding is a serious concern then use of a damp cloth pressure compress to staunch the bulk of the bleeding may be necessary. Do not use hydrogen peroxide on a fresh injury as this will hinder clotting and may in fact accelerate bleeding. It is wise to clean the wound with clean water so as to remove foreign debris on the wound surface prior to applying the wound gel.

Apply enough Wound Gel to cover the superficial wound and allow to sit.

We would recommend cleaning the wound at least every second day and re-applying the wound gel if the wound has not yet closed over and/or requires fly repellency.

Ace Paste Active Drawing Masque

Apply sparingly to damp skin and spread as required. For gentle exfoliation, gently rub the paste around on the skin during application. Once dry, remove with plain water. It would be sensible to follow use of the ACE Paste with a quality moisturiser.

Blood Clear Tonic

Best taken ~10 minutes before meals. Mix with 50ml Fresh Cool Water

We Suggest Commencing With 1 to 2 ml /day

May be increased to 2 to 5 ml /day

Maximum Adult Dosage 10 ml /day

It is suggested that use of the Blood Clear Tonic be combined with use of a quality pro-biotic.

It is possible to simultaneously combine usage of the Blood Clear and Happy Tummy Tonics.

Body Oil for Massage

Applied to the body as a massage oil, begin with a small amount and use more as required for greater lubrication during massage. May be combined with the Slow Release Rub.

Calendula Cream

Apply sparingly to the skin and massage in. May be used 2-3 times a day. Use sparingly on dry skin. To get better spread and use less cream it is suggested to apply to pre-dampened skin.

Calendula Foaming Wash

Skin - Dampen hands and apply 1 -2 pumps of foam wash to your palm. Apply to face, massage gently then simply rinse off.

Hair - Apply a reasonable amount of foam to the hands and work into wet hair. Wash out.

Calendula Oil

General skin care - massage a small amount of the oil into the skin.

Facial treatment - apply ~10 drops to your hands and gently massage in.

Burns - first cool the burn using fresh aloe or cold water and then 'drizzle' on Calendula Oil.

Grazes and bad eczema or psoriasis - 'drizzle' on and allow to soak in. (Please note that removing psoriasis scale will take up to a week with 1-2 applications per day.)

Calendula Lotion

Apply sparingly to the skin and massage in. May be used 2-3 times a day.

For Sunburn – Apply and spread over the affected area. Allow to soak for a while and then gently smooth the remainder of the lotion into the skin.

As a hair conditioning treatment - apply a very small amount to damp hair and brush through.

Calendula Ointment

Pre-warm a small quantity of ointment by blending it with your finger in the palm of your hand. Apply sparingly to the skin and massage in. May be used 2-3 times a day.

Calendula Orange and Cedarwood Ointment

Simply apply the ointment as required and massage in until smooth. When the ointment is too stiff to be applied to delicate areas, pre-soften by working the ointment around in the palm of your hand.

Cats Claw Extract

Best taken ~10 minutes before meals

We Suggest Commencing With 1 to 2 ml /day

May be increased to 3 to 6 ml /day

Maximum Adult Dosage 10 ml /day

Cold Sore Salve

Apply a small amount of salve to the itchy area or expected lesion zone. Do not over apply. One application twice a day is adequate. Too much applied to the lips too frequently can result in blistering.

CoQ10 Cell Renew Mist Spray

Close the eyes and apply a light mist over the face.

Wait a minute for the CoQ10 mist to absorb prior to the application of your facial moisturiser.

DEEP Relief Oil

Spray on sparingly. Gently massage in for warming effect and do not massage in for cooling effect. Generally Deep Relief Oil is combined with the Slow Release Rub (apply Oil first). Deep Relief Oil can also be used to extend the slip of the Slow Release Rub during massage.

Do not use during pregnancy or during the first year of breastfeeding.

Dream State Insomnia Spray

Use Dream State as an air spray or apply a light spray to both ends of your pillow so you can inhale the fragrance as you sleep. Do not over apply, as too much fragrance can have the undesirable effect of making it harder to fall sleep. It is not recommended that Dream State be applied directly to the face of the pillow where extended skin contact can occur.

FAST Acting Spray

Spray on sparingly. There is no need to rub in to the skin. Multiple applications can be applied for increased pain relief. Do not over-apply on the first application. FAST is typically effective on its own, but can be combined with the Slow Release Rub for a deeper and more prolonged effect (apply FAST first). May apply adhesive and/or supportive strapping once the spray has dried off.

Do not use during pregnancy or during the first year of breastfeeding.

Glide Creamy Vanilla Personal Lubricant

Simply apply Glide as and where required. Additional Glide may be applied as needed to maintain desired levels of lubrication.

Happy Tummy Tonic

Best taken before meals. Mix with 50ml Fresh Cool Water

We Suggest Commencing With 1 to 2 ml /day

Most People Use Between 2 & 5 ml /day

Maximum Adult Dosage 10 ml /day

For serious problems the suggested dosage can be used twice a day initially but this can be reduced to once a day following the first 5 days.

It is suggested that use of the Happy Tummy Tonic be combined with use of a quality pro-biotic.

Head Lice Lotion

Apply lotion to DRY hair. Do not use on wet hair. Use enough lotion to thoroughly wet both hair and scalp. Work the lotion around the scalp, particularly behind the ears where the bulk of the eggs tend to reside. Leave the lotion in the hair for a minimum of three hours. The use of a shower cap over the hair improves the lotion's effectiveness.

Remove the lotion from the hair by washing out with regular shampoo. The lotion will become 'gluggy' with the first shampoo and it may take a couple of applications of shampoo to completely remove all of the lotion.

It may be necessary to treat twice over a period of a week to ensure total kill and removal of both lice and eggs. For serious problems or to break down egg cement, it is suggested that the lotion be left in the hair overnight and washed out the following morning.

Lemonbalm Tea Tree and Eucalyptus Ointment

Simply apply the ointment as required and massage in until smooth. When the ointment is too stiff to be applied to delicate areas, pre-soften by working the ointment around in the palm of your hand.

Matern Oil

Massage a small amount of Matern Oil into the skin. May be used 2-3 times a day.

Do not use during the first tri-mester.

Melissa Oil

For best effect gently massage between ½ ml (11 drops) and 1 ml (22 drops) of Melissa Oil into the forearm, inner thigh or belly about 30 minutes prior to bed.

Children use ~½ ml (10 drops). Do not underestimate the power of this product.

Too much may make you feel *groggy* in the morning.

For irritated skin or herpes lesions - apply a small amount of the oil to the skin and gently rub in.

For minor anxiety issues simply apply some oil to soft skin as and when required

Mobility Tissue Repair Supplement

Mobility powder is generally added to the animal's feed or can be combined with molasses to provide a tasty and beneficial treat. Mobility Powder is generally quite palatable to horses.

Most Horses Use Between 5 & 10gm /day

Maximum Recommended 15 gm /day

Olive Horse Immuno-Digestive Support

Olive Horse can be applied directly into the mouth as required or can be added to feed.

Olive Horse is generally quite palatable to horses but it may be necessary, and less troublesome, to syringe the Olive Horse directly into the horses mouth.

Most animals require between 10 and 15ml daily.

The maximum recommended dose is 25ml / day.

Olive Leaf Extract Natural Double Strength

Contains approx 1.8 grams olive leaf per ml

Best taken before meals

We Suggest Commencing With 3 to 5ml /day

Most People Use Between 5 & 10ml /day

Maximum Adult Dosage 15 ml /day

For serious problems the suggested dosage can be used twice a day initially but this can be reduced to once a day following the first 5 days.

Olive Leaf Extract Mandarin

Contains approx 0.9 gram olive leaf per ml

Best taken before meals

We Suggest Commencing With 3 to 5ml /day

Most People Use Between 5 & 10ml /day

Maximum Adult Dosage 15 ml /day

For serious problems the suggested dosage can be used twice a day initially but this can be reduced to once a day following the first 5 days.

Retinox Anti-oxidant Eye and Face Moisturiser

Retinox can be used alone as a daily facial moisturiser or in combination with Refresh Toner Cleanser in the evenings. May be applied once or twice daily. May be used as a day time moisturiser in conjunction with using the Rosemary and Lavender Cream as a night time deep feed cream. Retinox is a lighter moisturiser than Replace.

Refresh Toner Cleanser

Apply a small amount of Refresh to the face and gently work over the skin. Allow Refresh to sit on the skin for a couple of minutes. Use a cotton pad to wipe off and gently remove from the skin. There is no need to wash afterwards. A moisturiser afterwards will aid skin hydration.

Replace Regenerative Deep Feed Cream Gel

Apply a small amount of replace to the skin and massage in thoroughly. Do not over apply the lotion and allow to sit on the skin to absorb. It is important to completely and thoroughly massage the lotion into the skin for it to be effective. May be used as a day time moisturiser in conjunction with using the Rosemary and Lavender Cream as a night time deep feed cream. Replace is a heavier moisturiser than Retinox.

Rosemary and Lavender Tissue Firming Cream

Suitable for use on all skin types. Use sparingly on dry skin. To get better spread and use less cream it is suggested to apply to pre-dampened skin. May be used as a night time moisturiser in conjunction with the Replace or Retinox as a day time, lighter moisturiser.

Scar Serum Fruit

Apply generously, but only once daily. Smear around and leave to sit on the skin. Do not rub into the skin as this will not allow the enzymes to adequately break down surface protein. Improve results by complimenting use of the Scar Serum Oil with Scar Serum Fruit – particularly for old or serious scarring where heavy skin needs to be removed. Scar Serum Fruit is used at night to break down the proteins on the surface of the skin, and the Scar Serum Oil is applied the following morning after bathing to aid in elasticizing the area. For use as a general exfoliant - apply twice a week and follow up with a high quality surface product, such as the Calendula Cream or Calendula Lotion.

Scar Serum Oil

Apply a small amount onto the scar or injured area. May be applied once or twice daily. For stretch marks or existing scarring the oil can be rubbed in, or, for more recent injury, allow oil to soak in. You can improve results by complimenting use of the Scar Serum Oil with Scar Serum Fruit – particularly for old or serious scarring where heavy skin needs to be removed. Scar Serum Fruit is used at night to break down the proteins on the surface of the skin, and the Scar Serum Oil is applied the following morning after bathing to aid in elasticizing the area.

SLOW Release Rub

Apply sparingly to injured area and gently massage in. More may be applied for increased pain relief. May be combined with Deep Relief Oil or FAST Acting Spray; when combining, apply Oil or Spray immediately prior to the Rub. **Do not use during pregnancy or during the first year of breastfeeding.**

Soft Face Wash

Wet hands and face prior to applying the wash. Apply a small amount of Soft Face Wash to pre-moistened skin. Gently work around the face in circular motions until the skin is clean. Avoid contact with the eyes. Rinse clean using cool or warm water and dry the face.

Skin Feast Eco-Lush Penetrating Body Lotion

Apply a small amount of Skin Feast to the hand and gently massage in to the skin to get even coverage. Skin Feast can be used at any time of the day but the best results will be noticed when used directly after a shower when the skin is clean. Skin Feast can be applied as many times as needed, particularly when washing the hands on a regular basis

Teeth Relief Gel

Shake well before use, apply directly onto the affected tooth or using a cotton wool bud.

For teething babies - apply 2-4 drops on your finger and rub into the gums directly.

Do not attempt to squirt directly from the dropper into baby's mouth.

For adults using the teeth relief for dental nerve pain simply apply as per baby application but use more product if required.



Product Application Guide

!!!! PLEASE NOTE !!!!

The following tabular recommendations are NOT to be misconstrued as medical advice and this document is NOT intended to be a substitute for professional medical advice.

TISSUE INJURY & MASSAGE PRODUCTS	Bony Areas	Deep Tissue	Whilst Pregnant and/or Breastfeeding	General Massage	Bruise and/or Sprain	Arthritis and/or Rheumatism
Slow Release Rub	✓	✓	NO	✓	✓	✓
Deep Relief Oil		✓	NO	✓	✓	✓
Fast Acting Spray	✓		NO		✓	✓
Matern Oil			✓	✓		
Body Oil For Massage			✓	✓		
Teeth Relief Gel			✓			

CALENDULA PRODUCTS	Eczema	Dermatitis	Rosacea	Psoriasis	Face	Body	Hair & Scalp
Calendula Foaming Wash	✓		✓		✓	✓	✓
Calendula Cream	✓	✓		✓	✓	✓	
Calendula Ointment	✓	✓		✓	✓	✓	
Calendula Lotion	✓	✓	✓	✓	✓	✓	✓
Calendula Oil	✓	✓		✓	✓	✓	✓
Calendula Orange and Cedarwood Ointment	✓	✓		✓		✓	

MELISSA PRODUCTS	Face	Body	Genitals	Hair	Herpes	Sleep	Agitation	Mild Anxiety	Dementia
Melissa Oil	✓	✓	✓		✓	✓	✓	✓	✓
Cold Sore Salve	✓	✓			✓				
Lemonbalm Tea Tree and Eucalyptus Ointment	✓	✓	✓		✓				
Head Lice Lotion				✓					

TONICS	Colds and Flus	Digestion & Liver	Immune Boost	Blood Cleanse	Joint Pain	Viral Infection	Parasites
Olive Leaf Mandarin	✓	✓	✓				
Olive Leaf Natural DS	✓		✓	✓		✓	
Happy Tummy Tonic		✓	✓	✓		✓	✓
Blood Clear Tonic		✓	✓	✓		✓	✓
Cats Claw Tonic			✓		✓	✓	

BODY CARE PRODUCTS	F a c e	B o d y	H a i r	Rosacea	Acne & T-Zone	Spider Veins	Stretch Marks	Scarring Blemishes	Tone & Structure
Replace Lotion	✓			✓		✓			
Retinox Lotion	✓		✓						✓
Skin Feast Moisturiser	✓	✓			✓				
Rosemary & Lavender Tissue Firming Cream	✓	✓							✓
Scar Serum Oil	✓	✓					✓	✓	
Scar Serum Fruit	✓	✓					✓	✓	
CoQ10 Mist Spray	✓			✓	✓	✓			✓
Soft Face Wash	✓				✓				✓
Refresh Toner Cleanser	✓			✓	✓				✓
ACE Paste	✓	✓			✓				✓
Dream State	To Improve Sleep and Reduce Agitation								

PERSONAL CARE PRODUCTS	Face	Body	Genitals	Hair
Glide Personal Lubricant		✓	✓	

EQUINE PRODUCTS	Tissue Injury	Digestion	Surface Wounds	Performance	Positive Mindset
Olive Horse		✓		✓	✓
Mobility Powder	✓			✓	✓
Analgesic Wound Gel			✓		

Product Trials

At Roseneath we understand that there is a dis-connect between how medicinal plant extracts are utilized today in modern society and how they have been utilized by our ancestors over past generations.

There is also a common misconception that perhaps natural products do not work as well as modern pharmaceuticals. This may be the case in some situations.

In an attempt to prove the efficacy of Roseneath Organics products we take any opportunity for our products to be trialled by independent bodies.



Report The efficacy of two head lice treatments Flinders University 2006

The efficacy of two head lice treatments and the likelihood of head lice becoming immune to these treatments

Environmental Health Student Michael Dinnen 28 August 2006

School of Medicine Flinders University Adelaide, South Australia

Executive Summary

A trial of the effectiveness of two head lice treatments, *K.P.24 Medicated Lotion* and *Roseneath Organics All Natural Head Lice Lotion* (ROANHLL), was carried out using students from 4 different schools in the southern districts of Adelaide.

There were whole school checks for head lice undertaken at all 4 schools.

The students that were found to have pediculosis had the choice to take part in the project as well as the type of treatment they would prefer to use.

Their guardians, who approved consent for their child to take part in the project, immediately collected the child from school.

The treatment for *K.P.24 Medicated Lotion* and the *ROANHLL* differed in application with respect to the time it is left in the hair; however, they were both applied on two different occasions 7-9 days apart.

There were 48 subjects that took part in the trial. Out of these that took part, 46 completed it successfully, with only 2 of the subjects either withdrawing or failing to return the consent form.

After the first application of *ROANHLL*, there was a higher success rate in removing head lice shown in the 25 students that used it, where as the *K.P.24 Medicated Lotion* had a lower and more unpredictable removal rate.

The second application of *ROANHLL* showed a 96% removal rate of head lice, whereas 21 subjects that used the *K.P.24 Medicated Lotion* showed signs of semi-active head lice with a removal rate of 71.4%.

Overall, the *ROANHLL* showed a higher success rate and was more successful in eradicating head lice than the *K.P.24 Medicated Lotion*.

Report Lemonbalm Trial Wesley House Nursing Home 2006

Prepared by Mary Hall RN 2006

Consent was obtained from doctors and families for this trial.

The Residents agitation was measured for 3 days.

Using a scale of 0 – 4, 0 being not agitated and 4 being severe agitation.

The resident was given a score every hour for 72 hours.

The first assessment before lemon balm commenced was on 17th of August. Residents scores were 22, 28 and 21, a total of 71 over 3 days.

Lemon balm oil was commenced on August 31st.

It was initially given BD at 0600 and 1600 hrs but later increased to TDS with the 3rd dose given at 2100 hours to ensure a peaceful night for the resident.

It was applied to skin on back, stomach, arms or legs, wherever was convenient.

It was not necessary to remove resident to a private room to apply, if resident was in the lounge, as it was applied to arms or forehead.

Second assessment commenced on 14th September and scored a total of 52 over 3 days.

The last assessment commenced on 21st of October and scores were 7, 7 and 4, a total of 18 over the 3 days.

The resident was also smiling much more and seemed more confident.

The residents PRN Neulactil is now rarely given.

Staff were happy to use the lemon balm as they saw the good effect it had and spent less time trying to calm the resident with other methods.

Lemon balm was quicker, easier and more effective than other methods.

Report Melissa Oil for Behaviour Management 2010

Prepared by Gayrie Barton CN 4/6/2010

Aim

To reduce episodes of agitation, aggressive behaviour using Melissa Oil as an adjunct to regular medication.

Project

Tappeiner Court Nursing Home is a 37 bed High Care Facility located in the eastern suburbs. Melissa Oil was commenced on a recommendation from the Dementia Behavioural Advisory Service (DBMAS). Melissa Oil preparations have been traditionally used for nerve pain, neuralgia, acne, shingles, eczema, irritated skin, insomnia, anxiety, agitation and nightmares (Roseneath Organics Pty Ltd 2010).

Method

Residents were selected based on behavioural issues, anxiety, agitation or recommendation from DBMAS.

Melissa Oil was applied topically to the residents skin; hands, legs, arms and temples.

Initially one resident was selected after review from DBMAS. Melissa Oil was massaged into her hands twice daily and staff recorded the results. A significant reduction in behaviour was noted by staff, resident was more calm, less agitated, resident's speech was more appropriate. The resident was able to rejoin other residents in the dining room as she was less confrontational and verbally inappropriate towards other residents.

Following the success of the initial trial we commenced using Melissa Oil with a new admission to the facility. This was a gentleman with a long standing history of behavioural issues and neurodermatitis (related to anxiety). Oil was massaged into his hands, stomach and temples twice daily and as needed if especially anxious and agitated.

Upon commencement of the Melissa Oil trial staff noted a reduction in his anxious, agitated behaviours, significant reduction in scratching and tearing of the skin on his stomach. The resident slept better and longer at night and was more amiable towards staff and other residents.

The oil is now being used regularly on three residents with a reduction in behaviours on all three residents. Staff are also applying the oil to other residents in the facility when agitated or anxious before administering PRN medication, as staff have reported good results from the oil.

Several staff members have also purchased Melissa Oil for private use with reports of success in reduced pain (back, hip, and bursitis), improved sleep and general wellbeing.

Conclusion

Melissa oil has been accepted as a first level treatment in the management of agitation and anxiety in aged care residents residing in Tappeiner Court Nursing Home. Residents appear calm and less agitated after application of the oil and sleep more soundly at night. Residents require less PRN medication, or a reduced dose when used in combination with Melissa Oil.

Report Barossa Village Residency Melissa Oil Trial 2011

Prepared by Linda Nixon RN & Remedial Massage Therapist

9/11/2011

It was identified that there were several residents who displayed agitated and restless behaviours over an extended period of time. This was evident by progress note documentation, handover reports, behavioural and sleep assessments, and the amount of medication (both regular and prn) that was being administered. All attempts to reduce agitation, including pharmacological, had little effect. A holistic approach was considered, with the aim to reduce episodes of agitation, anxiety and disruptive behaviour.

Melissa Oil was identified as a product with good results, after discussions with the Alzheimer's Association. Residents were selected to participate in the trial based on behavioural issues, anxiety and agitation. Consent was obtained from doctors and families for the trial. Staff were educated about the trial and the product.

The trial was conducted for over 40 days, with behaviour monitoring for the entire period. Melissa Oil was applied tds at 0830, 1400 and 2000. It was applied to skin on the arms, abdomen, legs or back, whichever was suitable at the time.

Since the commencement of the trial a significant reduction in behaviour has been noted by staff. For all residents on the trial there have been measurable improvements in behaviour. Some residents have had a mild improvement and continue to experience some agitation requiring additional medication.

One resident has had an 80% reduction in prn medication since commencing Melissa Oil. Another resident has reduced medication by 50% and staff have made comments such as "calmer, jovial, joyful and more alert". Episodes of physical aggression have dramatically reduced.

Care staff have shown a strong interest in the Melissa Oil as they witness first hand the benefits that the residents have experienced.

Some staff have purchased the product for personal use and are reporting good results with family members. A staff member with a child with ADHD and another with a child with autism have provided very positive feedback and are keen to continue to use the product.

Staff and residents are happy with the product.

Melissa Oil has had a positive effect within Barossa Village residency.

We will continue to use the product when a resident is identified with behavioural issues that may benefit from using the product.

Experiences with Melissa Oil from CLAYTON CHURCH HOMES PARK VILLAGE NURSING HOME ELIZABETH PARK 2011

I have had huge success with one particular gentleman. We could not get near him to address any personal hygiene issues.

He was very aggressive towards staff he would hit and punch, scratch, spit at the staff and he would punch with a lot of force that could have caused staff serious injury.
The P.R.N. medication did not have any effect on him.

Once we commenced him on Melissa Oil it completely changed him and we could attend to all of his A.D.L's.

It was a huge success. We also used far less P.R.N. medication to calm him down.
He now is happy and the majority of the time in a really good mood.
He now laughs and smiles. This was not occurring before.

We were going to use this for the Better Practice awards however it hadn't been twelve months.

Other residents are much calmer and are also more compliant and there is a lot less aggression in our Dementia specific unit.

Cindy Penn Site Coordinator Park Village

Tissue Injury and Massage Products



Tissue Injury and Massage SELECTION CHART						
Application	RUB	OIL	FAST	Body Oil	Matern Oil	Teeth Relief
Deep Tissue Injury	✓	✓				
Bony Areas	✓		✓			
General Massage	✓	✓		✓	✓	
Bruise or Sprain	✓	✓	✓			
Arthritis / Rheumatism	✓	✓	✓		✓	
Pregnancy / Feeding	NO!	NO !	NO !	✓	✓	✓

Effective Active Product Duration (General Guidelines)	
Up to 6 Hours	Deep Relief OIL or FAST Acting Spray
Up to 8 Hours	Slow Release RUB
Up to 10 Hours	FAST Acting Spray first then SLOW Release RUB on top
Up to 12 Hours	DEEP Relief OIL first then SLOW Release RUB on top
>12 Hours	FAST Acting Spray first, DEEP Relief Oil second and then SLOW Release RUB on top

Constant customer feedback and testimonials tell us that Roseneath customers find that our pain relief products will generally 'out perform' just about every other anti-inflammatory pain relief and tissue repair product on the market with the exception of some stronger pharmaceutical prescription drugs.

One combined application of two products from the range can provide in excess of 14 hours' continuous pain relief whilst simultaneously encouraging more rapid and effective tissue repair.

Roseneath Organics performed a product comparison during 2006/2007. We compared the active ingredients found in the Roseneath pain relief products against competitors' brands commonly found over the counter at most chemists or pharmacies. The comparison clearly showed why the Roseneath products outperform the opposition hands down. Roseneath products have 26 extra classical active herbal ingredients that none of the other 22 competing products contain ... except tiger balm products that contain clove oil.

The Slow Release Rub is the core product and biggest seller in the Roseneath pain relief products range.

The Oil is generally purchased by clients who wish to increase the effect of the Rub. Some people use the Oil on its own for relief of joint pain, but most clients combine it with the Rub for deeper tissue problems and /or prolonged pain relief.

The FAST Acting Spray is very popular with people who are after effective pain relief with no oily residue or strong odour. Older people seem to enjoy using the FAST spray for general relief of joint and muscular pain. This is generally because they don't have to rub anything in to achieve relief, the spray does not '*burn the skin*' (as we are told) and the residual smell of the FAST spray is more preferable in the nursing home environment.

When using the Roseneath pain relief products we would encourage experimentation combining and inter-mingling the products to obtain varied and enhanced effects.

In most cases people apply the Deep Relief Oil or the FAST Acting Spray first and then immediately apply the Slow Release Rub over the spray whilst it is still wet. They then massage the combination into the skin.

If you use the Deep Relief Oil before the Slow Release Rub then the overall effect will be to physically deepen the pain relief and tissue repair effects. This combination makes it last effectively twice as long as the Rub on its own. The Oil will thus act as a product extender for the Rub whilst simultaneously increasing the pain relief effect.

If you use the FAST Acting Spray before the Slow Release Rub then the overall effect will be to deepen the pain relief and to make it last effectively one and a half times as long as the Rub on its own. The FAST Acting Spray will however become active a lot faster than the Oil will and thus the FAST Acting Spray is often used where fast relief is required. The added bonus is that the FAST Acting Spray does

not require any rubbing into the skin. This is great for situations where bandages or elastic/adhesive supportive strapping is used over the affected area.

In the case of injuries where it would be very painful to touch, then the Rub should be applied a couple of minutes after the FAST or Oil has been heavily applied. This will allow for some analgesia to take effect before the Rub is applied to the sensitive area. In these cases the Rub should generally be smeared on quite heavily, with minimal massage or rubbing of the damaged tissue. This will allow the Rub to be completely effective without further aggravation to the injury. A thicker application of the Rub will also result in more relief over a more prolonged period.

The Deep Relief Oil and Slow Release Rub combination is best on deep tissue areas and the FAST Acting Spray and Slow Release Rub combination is best on bonier areas.

The Slow Release Rub is generally compatible with massage oils. People who use these products as part of therapeutic or sports massage find that the Rub has limited 'slip' when used on its own. We suggest that people first spray on the Oil and then immediately mix in a small '*dob*' of the Rub. This will markedly improve the slip and extend the workability of the products on the skin. During massage, if further slip is required, then another spray or two of the Oil will suffice.

For a complete back and shoulder massage generally about four or five mist sprays of the Deep Relief Oil is combined with a small '*dob*' of the Slow Release Rub. The Oil provides extra slip for the Rub when used over large tissue areas. The Oil also acts as a penetrant enhancer and allows the Rub to work deeply and for much longer. When the Rub and the Oil are combined during a therapeutic massage, the two products can provide up to 16 or even 18 hours of continuous relief, for certain types of pain.

The bulk of our clients are sports therapists, massage therapists and chiropractors. These clients all find the products an excellent addition to their practice.

In fact we have noted that most therapists, even chiropractors who are traditionally averse to the idea of using products with clients, have found that the incorporation of Roseneath pain relief products into their practice has grown their retail dollar whilst assisting them to grow their client base.

Clients using the Roseneath pain relief products regularly remark on how effective and long lasting they are.

Sports trainers have told us that their players are out for shorter periods and heal faster when using the Roseneath pain relief products.

SLOW Release Rub 100gm and 500gm

What is it for and what does it do ?

Slow Release Rub is for use on bruises, knocks, bumps, strains and other forms of inflammatory muscular and tissue injury. Slow Release Rub is the core product in our pain relief range. It is a genuine natural anti-inflammatory and pain relief formulation. When used on its own it can provide continuous pain relief for up to 6, or even 8, hours.

How do I use it ?

To use the Rub simply apply a small *dob* and then massage gently into the area of concern. The more Rub applied, the stronger the effect it will have. The Rub can be combined with the Deep Relief Oil or the FAST Spray for an enhanced effect. Combine Slow Release Rub with Deep Relief Oil for deep tissue injuries and muscular areas. Combine Slow Release Rub with FAST Acting Spray for bony areas and poor circulatory zones. When combining, apply the Rub following the initial application of Deep Relief Oil or FAST Acting Spray.



Does it have any distinctive features ?

The Slow Release Rub contains 48 natural plant based ingredients that make it truly effective. Many of these plant extracts are generally more expensive than the synthetics found in most standard off-the-shelf products. The cost and general lack of quality plant extract availability is the reason that these more unusual plant ingredients are not generally found in mainstream products. Looking around the industry has shown us that the Slow Release Rub contains an extra 26 active ingredients not found in other conventional products. The only mainstream products found that contain any of these ingredients are Tiger Balm products, which contain oil of cloves.

Is there a Roseneath alternative to this product ?

Depending on the nature of the pain relief sought, Slow Release Rub can be substituted for by Deep Relief Oil or FAST Acting Spray products.

What other brands can I compare this product to ?

The industry offers many products for pain relief and tissue repair. It is hard to compare the Slow Release Rub to these other products given the extensive ingredient list for the Rub. The only commercial natural product that gets anywhere near to the complexity of Slow Release Rub is Tiger Balm. Ask Roseneath for a comparison spreadsheet for a better understanding. There are quite a number of synthetic products available in the marketplace but feedback from our customers tells us that the Rub out-performs most of these synthetic products.

Why would I buy this Roseneath product over the other brands ?

Slow Release Rub is an all-natural product. It is locally produced in South Australia from herbs grown organically and sustainably on our own medicinal herb farm in the Adelaide Hills. The Rub contains many natural plant extracts that have been historically shown to aid and improve the bodies own healing mechanisms. Many of these extracts are simply not available in other products.

Are there any cautions I should be aware of when using this product ?

Slow Release Rub contains many ingredients that should be avoided during pregnancy or whilst breast-feeding. It also should not be used when people are undergoing chemotherapy, as this may result in rashes and irritation. The Rub contains higher than normal levels of salicylates and thus should be treated cautiously by people with aspirin sensitivity. People should avoid application of the Rub to previously irritated skin or infected wounds. Keep out of eyes and not for internal use.

Slow Release Rub Contains ...

Bees Wax Organic Coconut Oil Fresh Biodynamic Aloe Gel Biodynamic Mustard Oil
Oil of Wintergreen Peppermint Menthol White Camphor Essential Oil Chilli Extract
Organic Shea Butter Cold Pressed Sweet Almond Oil Lecithin Ethanol Arnica Extract
Organic Elder Leaf Extract Organic St Johns Wort Extract Essential Oils of Juniper, Clove(BP),
Lemon Grass, Eucalyptus, Black Pepper, Sweet Marjoram and Wild Thyme Extract of Guaiacwood
Witch Hazel Extract Organic Apple Cider Vinegar Organic Mullein Extract Flaxseed & Olive Oils
Kosher Food Grade Vegetable Glycerine Organic Astragalus Extract Organic Ginger Extract
Organic Yarrow Extract Myrrh Extract Vanilla Extract Peru Balsam Essential Oils of Rosemary,
Spike Lavender, Cajeput, Lemon, Arvensis, Citronella and Vetiver Pine Oil Extract Xanthan Gum
Guar Gum Acacia Gum Citrus Pectin Borax

FAST Acting Spray 125ml and 500ml

What is it for and what does it do ?

FAST Acting Spray has been specially formulated to provide fast acting pain relief and tissue relaxation. It is a 'no-touch' product. The spray can be sprayed on and does not require any 'rubbing in' or massage. FAST Acting Spray is more appropriate for bony areas and extremities where circulation is lower. FAST Acting Spray can be combined with Slow Release Rub for enhanced effect.

How do I use it ?

Simply spray on and wait. After about 15-30 seconds most people feel a prickly sensation as the nerve transmitters in the damaged zone fire off the substance. Within about 60-90 seconds the FAST Spray has generally reached its maximum effect. It may take up to 2 minutes on some individuals and on specific body parts. The more Spray that is applied, the stronger the effect on the body. For serious pain it is suggested that one light application be made initially rather than one heavy application. More FAST Acting Spray can then be subsequently applied to increase the desired effect.



Does it have any distinctive features ?

FAST Acting Spray is in an ethanol base and utilises concentrated organic calendula flower extract for the salicylates. These salicylates are naturally occurring within calendula flower. The product also includes Wintergreen and Ilex (Yerba Mate) for added relief. The essential oils chosen for this fast acting product include more traditional varieties such as Juniper Berry and Sweet Marjoram. Juniper acts as a carrier to enable better penetration of the Spray. Sweet Marjoram is itself a premier bruising and pain relief treatment.

Is there a Roseneath alternative to this product ?

Depending on the nature of the pain relief sought, FAST Acting Spray can be substituted by Slow Release Rub or Deep Relief Oil.

What other brands can I compare this product to ?

This is the only Roseneath pain relief product that is comparable with other conventional products intended for use on general sporting injuries. Other commercial brands do not contain sweet marjoram, juniper or calendula flower extracts to provide pain relief.

Why would I buy this Roseneath product over the other brands ?

Our product harnesses the power of natural calendula flower for pain relief and is made using food grade natural ethanol. Most commercial products contain a synthetic cream / lotion base or in isopropyl alcohol or phenoxy-ethanol. Neither of these solvents are really suitable for extended exposure on the skin or for use over extended periods.

Are there any cautions I should be aware of when using this product ?

When applied to certain areas of the body FAST Acting Spray can be quite hot initially. This heat is not felt by most people but for the few that do experience this, it generally occurs when using the spray on places around the back of the neck or on the lower back. This is due to the sensitive nature of the skin. We suggest some caution when using large amounts in sensitive areas. We also suggest one initial light application followed by late subsequent applications as and when required. Keep out of eyes when spraying and not for internal use.

FAST Acting Spray Contains ...

Pure Ethanol Pure Water Organic Calendula Extract Oil of Wintergreen Ilex Paraguariensis Extract
Peppermint Menthol Essential Oils of White Camphor, Eucalyptus, Wild Thyme, Sweet Marjoram,
Juniper Berry and Clove Bud Oil (BP) Pure Salicylic Acid

DEEP Relief Oil 50ml and 500ml

What is it for and what does it do ?

Deep Relief Oil provides topical analgesia and will also encourage tissue repair.
Deep Relief Oil can provide either a warming or cooling action.
Deep Relief Oil is a penetrant enhancer for the Rub and is **NOT** a massage oil.
Deep Relief Oil extends the action and the working depth of Slow Release Rub.
Deep Relief Oil extends the skin slip of Slow Release Rub during therapeutic massage.
Deep Relief Oil is also fantastic for killing fungus under the nail.

How do I use it ?

To achieve an analgesic cooling Deep Relief Oil can be lightly sprayed on and left untouched. When sprayed on and then massaged into the skin Deep Relief Oil generally results in a deep heating effect. Either way, heating or cooling, the product will usually last for some three to four hours when used on its own. The more you apply the stronger the effect. To combine with Slow Release Rub, first spray Deep Relief Oil onto the affected area and then immediately apply a small dab of Slow Release Rub. Massage the Rub into the skin over the Deep Relief Oil. This combination will markedly extend the overall analgesic effect and the penetration of Slow Release Rub.

Does it have any distinctive features ?

The Roseneath Deep Relief Oil is not simply some active ingredients dissolved into alcohol. It is primarily comprised of solid menthol from peppermint and solid white camphor. The salicylates, or natural aspirin, is provided by organic calendula flower extract. Calendula flower has been used for bruising and injury for many centuries. Deep Relief Oil also contains Sweet Marjoram essential oil which is the premier bruise treatment listed in many western herbals. It is a very expensive essential oil and is not normally utilised in commercial pain relief products.

Is there a Roseneath alternative to this product ?

Depending on the nature of the pain relief sought, Deep Relief Oil can be substituted by Slow Release Rub or FAST Acting Spray.

What other brands can I compare this product to ?

The industry offers many topical products for pain relief and tissue repair. It is hard to compare Roseneath Deep Relief Oil to these other products given the calendula and essential oil ingredients found in Deep Relief Oil. Ask Roseneath for a comparison spreadsheet for a better understanding.

Why would I buy this Roseneath product over the other brands ?

The Roseneath Deep Relief Oil is locally produced in South Australia from calendula flowers grown organically and sustainably on our own medicinal herb farm in the Adelaide Hills. The Oil contains concentrated calendula in conjunction with high levels of effective essential oils. These essential oils are generally not used in other products.

Are there any cautions I should be aware of when using this product ?

Deep Relief Oil contains menthol and camphor and should not be used by people when pregnant or when breast feeding. Deep Relief Oil should not be used when people are undergoing chemotherapy, as this may result in rashes and irritation. Deep Relief Oil contains higher than normal levels of salicylates and thus should be treated cautiously by people with an aspirin sensitivity. People should avoid application of Deep Relief Oil to previously irritated skin or infected wounds. Keep out of eyes and not for internal use.

Deep Relief Oil Contains ...

Peppermint Derived Menthol White Camphor Essential Oil Eucalyptus Essential Oil
GM-Free Rice Bran Oil Organic Calendula Extract Thyme Essential Oil
Sweet Marjoram Essential Oil Ethanol Salicylic Acid



Body Oil for Massage 125ml and 500ml

What is it for and what does it do ?

Body Oil is generally suitable for massage anywhere on the body.

This product is also suitable for use on the face.

Body Oil provides good slip with a nice non-greasy feel following massage.

How do I use it ?

It can be applied to the body as a massage oil.

Does it have any distinctive features ?

Body Oil is formulated using GM-Free rice bran oil and as such contains high levels of oryzanol and natural vitamin E.

Body Oil contains organic rosehip and organic jojoba oils which have been shown to encourage superior skin repair. Body Oil has a pleasant velvety skin feel and almost no aroma. Body Oil contains natural GM Free lecithin which helps to easily remove the oil from towels and linen during cleaning.

Is there a Roseneath alternative to this product ?

There is no current Roseneath alternative to this product.

What other brands can I compare this product to ?

There are many massage oils available on the market. Very few products contain high levels of both organic rosehip and organic jojoba oils

Why would I buy this Roseneath product over the other brands ?

The vegetable oils selected for Body Oil provide a rich luxuriant skin feel with high levels of vitamin E.

Are there any cautions I should be aware of when using this product ?

Even though Body Oil has been specially formulated with safety in mind it should not be used on people with known nut allergies.

Body Oil For Massage Contains ...

GM-Free Rice Bran Oil Organic Jojoba Oil Virgin Sweet Almond Oil Organic Rosehip Oil
Virgin Wheatgerm Oil GM-Free Lecithin



Matern Oil 125ml

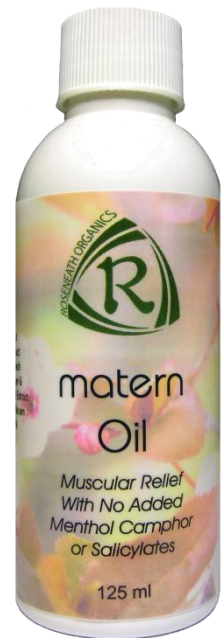
What is it for and what does it do ?

Matern Oil has been specially formulated for use by pregnant women and also by women who are breast feeding.

Matern Oil provides general muscular pain relief and also contains high levels of natural Vitamin E and fatty acids to help with skin stretch and recovery.

The pleasant aroma of Matern Oil is generally relaxing and warming.

It has a sweet ginger and cinnamon smell.



How do I use it ?

It can be applied to the body as a general massage oil.

Relief will generally be felt after about 10-15 minutes from application.

As with any product containing essential oils, Matern Oil should not be used during the first tri-mester.

Does it have any distinctive features ?

Matern Oil does not contain any added menthol, camphor or salicylates. It provides pain relief using natural ingredients that have been historically used by pregnant and post natal mothers around the world. These ingredients have been selected for their apparent

safety and low toxicity to mother and the developing baby during pregnancy and whilst breast feeding. Matern Oil is formulated using GM-Free rice bran oil and thus contains high levels of natural

vitamin E, has a great skin feel and a generally pleasant aroma.

Is there a Roseneath alternative to this product ?

The customer could use Roseneath Body Oil for massage of sore areas. The Body Oil will not provide any pain relief as does the Matern Oil which contains suitable herbal extracts and essential oils.

What other brands can I compare this product to ?

Presently we are not aware of other natural products that Matern Oil can be compared to.

Why would I buy this Roseneath product over the other brands ?

This product has been made with the mother and baby in mind. Unlike most commercial pain relief products, Matern Oil does not contain synthetic chemicals which could prove harmful for the mother and child.

The vegetable oils selected for Matern Oil provide a rich luxuriant skin feel with high levels of anti-oxidants.

Are there any cautions I should be aware of when using this product ?

Even though Matern Oil has been specially formulated with safety in mind, it should not be used during the first tri-mester. It is wise to minimize any mother's exposure to any chemicals during the first tri-mester. It is not wise for any pregnant woman to use any pain relief products containing high levels of menthol, camphor or salicylates. The reason for this is that baby does not have a fully developed liver until about 8-10 months following birth. Menthol, camphor, salicylates and many other substances are hard for baby to get rid of prior to the liver being fully functional.

Matern Oil Contains ...

Virgin Sweet Almond Oil Organic Jojoba Oil Organic Sesame Oil Virgin Macadamia Oil
GM-Free Rice Bran Oil Virgin Wheatgerm Oil Organic Lemonbalm Extract Organic Yarrow Flower Extract
Essential Oils of Cajeput, Black Pepper and Lime Essential Oils of Lemon, Ginger and Cinnamon Bark
Almond Oil Extract Coconut Oil Extract Peru Balsam Rose Geranium Essential Oil

Teeth Relief Gel 50ml

What is it for and what does it do ?

Teeth Relief Gel is for relief of dental nerve pain and contains pain relieving herbal and mineral extracts. Teeth Relief provides pain relief and stops the throbbing of a compromised nerve. Teeth Relief is just as effective as pure oil of cloves but without the risk of getting some clove oil trickling down your throat.

Teeth Relief Gel also taste much better than oil of cloves and can also be used on infants during teething.

How do I use it ?

Shake well before use. Teeth Relief Gel can be applied directly onto the affected tooth or it can be applied using a cotton wool bud directly to the upper teeth.

To apply to teething gums simply put a couple of drops on your finger and rub the drops onto the gums directly. Do not attempt to squirt directly from the dropper into baby's mouth, as it will invariably go down their throat and will be uncomfortable for them.

Swallowing Teeth Relief Gel may very well upset the stomach.

Does it have any distinctive features ?

Teeth Relief Drops are all natural and use natural herbal and mineral pain relievers.

Teeth Relief has a pleasant taste and lasts for approximately 20 minutes.

Unlike other teething products it is safe to use Teeth Relief over an extended period.

Is there a Roseneath alternative to this product ?

No. Currently, this is our only product for dental issues.

What other brands can I compare this product to ?

We are not aware of any effective natural products for dental pain relief. Most dental pain relief gels available for young children from hospitals seem to contain opiate based pain relievers such as lignocaine or lidocaine.

Why would I buy this Roseneath product over the other brands ?

It is natural and it works well for managing a tooth problem until you can get to a dentist. It tastes a much better than pure clove oil and is far more manageable in your mouth. Teeth Relief Gel does not contain any synthetic or opiate based pain relievers such as lignocaine or lidocaine.

Are there any cautions I should be aware of when using this product ?

It can be uncomfortable to squirt the Teeth Relief Gel down your throat so we advise caution if applying from the dropper direct. It is not generally toxic to swallow Teeth Relief but it can be unpleasant.

Teeth Relief Gel Contains ...

Ethanol Organic Spilanthes Extract Kosher Food Grade Vegetable Glycerine Colloidal Silver
Fresh Organic Aloe Gel Kava Kava Root Extract Organic Lemonbalm Extract Wild Rosehip Syrup
Xanthan Gum Essential Oils of Clove and Peppermint Essential Oil of Cinnamon Bark
Saltpetre (KNO₃) (0.35 % w/v)



Tissue Injury and Massage Product Testimonials

Deep Relief Oil / Fast Acting Spray / Slow Release Rub

"I am a retired Director of Nursing who was employed for 50 years in the Health Industry. During that time our clinical management activities included lifting patients without the aid of a mechanical lifting machine.

As a result the trauma to tendons, ligaments and muscles has left me with severe pains in the backs, hips and shoulders.

I have sought medical advice and have had various medical procedures to the affected areas. I am still experiencing significant pain to the affected areas and have therefore tried various applications of ointments to reduce the level of pain.

I have found the Roseneath Slow Release Rub to be the most effective in reducing the pain. 'The Rub' seems to calm and anaesthetise the affected area.

I have recommended the Rub to many of my colleagues and they have reported similar pain relief in dealing with their problems.

I am therefore very pleased to recommend this product to anyone with strains/sprains of tendons, ligaments and muscles." **Christine D. (retired D.O.N.) SA**

"I am involved with the Yankalilla Football Club as their masseuse and happy to advise that I use your Slow Release Rub and Deep Relief Oil for pregame rubs when/where necessary and Fast Acting Spray during the game on calf muscle cramps or muscle tightness." **Cheryl L, SA**

"I have been using the Roseneath produces for many years now and have found nothing else that compares to the muscle Rub for my tight muscles! As I am an Equine Myofunctional Therapist my shoulders/ neck can get stiff. So when I ran out of Rub I contacted Roseneath who were more than happy to post out their products to me here in Tassie... I always recommended Roseneath product for people and horses and shall continue to do so." **Mandy C. Tas**

"Just a short note to say how grateful I am to have your Slow Release Rub for the past 7 days. I have some very serious permanent injuries from car accidents many, many years ago and every day of my life has had nasty painful moments. On the 3rd day after using your Rub I began to feel wonderful results and was so very happy. I have had 2% of pain a day since then and that's only because I have felt so great and been stupid enough to once again, break the 'rules' and do physical things that I know I must not do. Your Rub is just wonderful and I hope that heaps and heaps of people that have body pains and problems learn about it and use it. I only use it once a day now even though those areas are pain free. I guess whatever it is that you have made needs to be daily applied on the nasty places so that it penetrates deep within ones joints and continues to maintain pain free days. Thank you dear Adam for all the work and research you must have done to make this gear. I did use Elmore Oil for about 4 years and Zen Spray but now I am glad to say you have a product equally as good, if not even better. Guess it's your gear from now on thankfully." **Ivy & Patsy**

"I would surely recommend the [Slow Release] Rub to my friends to try. It has not got a very strong smell and it does not burn." **Pat, SA**

"I do appreciate your wonderful products, as do my clients. You are providing a most valuable contribution to others in need, making so much pain relief possible, so they can lead more fulfilled lives." **Robi, SA**

"I recently purchased Slow Release Rub from my chiropractor and it is great i love it and it smells wonderful." **Tracey O**

"A friend has just introduced me to Slow Release Rub and It is amazing. Now my Physio wants to know about you. Thank you" **Lynne**

"I work as a massage therapist and used the slow release rub on a client. She really loved your product." **Ross M, Adelaide**

"The amount of pain relief I have experienced from the Roseneath products is amazing. I have been doing martial arts for quite a number of years and used many other products but never as good and effective as this one. I fully recommend it to everyone and I do." **Jamahl Brine, Zen Do Kai Martial Arts Member, Woodcroft, SA**

"As is everybody today, I am very health conscious and particular about what I use on my body internally and externally. Therefore, it is important to me to have products that are as natural as possible. Having studied martial arts for close to a decade and a half, bruising, muscle soreness and aching joints have become a common part of my life as has the use of products like tiger balm, deep heat etc. At the end of 2005 I was introduced to Slow Release Rub, an all natural product of the Roseneath Organics company. This product I found to be as good as, if not better than current commercial brand name ointments, creams and lotions. The Slow Release Rub seems to have somewhat of an instant effect on muscle soreness and is also fast acting on swelling, bruising and other injuries incurred through training." **Sensai Scott Reardon, 3rd Dan Martial Arts Instructor and Massage Therapist, Seacliff, SA**

"A very dear friend of mine introduced me to your excellent products some months ago...Your Roseneath Slow Release Rub is very effective within my practice." **Jan O. WA**

"Thank you. It is a very good product" **Norman L. The Violin Doctor Moorland NSW**

"...thank you for the Roseneath Slow Release Rub. It sure gave me a lot of relief" **Ivy T. Mount Barker SA**

"Roseneath Slow Release Rub lasts longer than regular rubs and is generally easier to work into the skin. We find that the Roseneath products deliver more warmth over a longer period of time than regular off the shelf products. Our players tell me that they much prefer Roseneath products on their injuries than the standard products. They like the fact that it is a natural product. We have found that Roseneath products relieve pain quicker than what we have previously been using. The products also seem to provide accelerated healing of bruises. We have also noticed that the products reduce inflammation better than the other off the shelf products. During one season we generally use between 7 and 8 full 500 gram tubs of Metsal cream but with the Roseneath Rub and Oil we are using about one and a half 500 gram tubs of Rub and one large 500 ml bottle of Roseneath Oil." **Sandi O Level 2 Sports Trainer, Registered Nurse, Football Club Head Trainer**

"I've been using the Roseneath Slow Release Rub as well as the Deep Relief Oil and find them excellent products. In fact, I think they are the best products around for their anti-inflammatory action, pain relief and assisting in the repair of bruised tissue....I use them daily to strengthen the connective tissues around my weak spots, like a bulging disc on the lower spine...Many thanks for these excellent products" **Violet M. Vale Park SA**

"I bought Roseneath FAST Acting spray with the intent to use on my clients for Sports Massage. Wanting relief myself for the pending 3 hour Easter drive, I sprayed this miraculous spray on my own arms and shoulder. The warming sensation numbs the subtle arm and shoulder pain" **Tamara H. Sports Massage Therapist Gilberton SA**

"...Margrit gave me a jar of .. Rub, I have to tell you it is very good, as it eases the pain I suffer from arthritis and rheumatism." **Heidi K. Zurich Switzerland**

"Just Received Roseneath Slow Release Rub! What Bliss !!!" **Jenni H. Minyip VIC**

"I am 87 years old with a birthday coming up in the near future and I was introduced to the Roseneath Slow Release Rub and Deep Relief Oil by Margrit Warmer (practitioner). Since then I have doubled my dancing from twice a week to 4 times a week. I use the Oil and the Rub two hours before dancing and have no trouble doing 19-20 dances. I am certain Roseneath will keep me dancing for many years, many thanks" **Dick Sweet, Dancer, Woodville, SA**

"To whom it may concern. Slow Release Rub what a great product! I have had fabulous results since I started using the rub. At this stage it has worked on our horses & ourselves. I have used it on capped hocks (Not easy to fix), swelling on legs, tendons, girth areas & horses backs with no adverse problems as with other products. (Scalding can occur on backs and girth areas) It wasn't until I had a sore shin that I found out how great this product could be. Within 20 minutes all the soreness was gone & I forgot I had any pain. I continue to use the rub on all my aches and pains and have recommended it to many of my friends. One friend to whom I suggested the rub and suffers with bad arthritis said to quote. "I haven't felt this good in 15 years"" **Sally L, Ungarra, SA**

Teeth Relief Gel

"Just wanted to let you know how GREAT your Teeth Relief product is. I used it with my first as other products I tried gave her an upset tummy and it worked a treat. She would point to it so I would rub it on her sore little gums. I didn't even consider using anything else for my next bub... I also used it on myself while pregnant with a tooth infection and it saved me. Thank you so much for a great product." **Crystal W, QLD**

"worked really well for us" **Joanna B, used Teeth Relief for 2 teething babies**

"Fantastic, absolutely awesome – for me & baby" **Megan B**

"helped to settle him; especially useful when we wanted him to go to sleep... nice to know it's organic & natural" **Luke D used Teeth Relief on his teething baby**



Calendula Products



CALENDULA SELECTION CHART							
Product	%	Body	Hands	Face	Hair	After Sun	Burns
Calendula Oil	100	✓	✓	✓	✓	✓	✓
Calendula Lotion	32	✓	✓	✓	✓	✓	✓
Calendula Ointment	26	✓	✓	✓			
Calendula Cream	21	✓	✓	✓		✓	✓
Calendula Orange & Cedarwood Ointment	20	✓	✓	✓			
Calendula Foaming Wash	11	✓	✓	✓	✓		

Calendula flower was the first medicinal herb grown organically at Roseneath Cottage. It is now one of our premier crops at Roseneath farm.

Calendula flowers contain a large number of both simple and complex pharmacological components. Predominantly, the mature flowers contain high levels of salicylates and carotenoids. Salicylates are natural forms of aspirin and carotenoids are natural forms of vitamin A.

Natural chemicals found in calendula flowers have been shown to accelerate the epithelialisation of connective tissue which, in short, means that using calendula products on the skin encourages new healthy surface tissue.

Calendula flowers have been used both as food and as traditional medicine for at least a thousand years.

At Roseneath we try to grow the very best calendula flowers that we can. We have spent years naturally cross-breeding quality commercial strains to ensure that we grow only the most potent and active plants. The flower tops are hand-picked to avoid undesirable chemical changes caused by mechanical damage and subsequent bruising. Using solvents such as ricebran oil, glycerine, alcohol and water the active ingredients are then extracted using well proven age-old techniques.

Alcohol tinctures are extracted from freshly picked flowers to maximize the therapeutic effectiveness of the extract. Oil infusions are prepared using shade dried flowers and the oil is infused over several months using only sunshine to warm the oil. All infusions are done inside INOX stainless steel vats.

We like to think that we are capturing arguably the best quality calendula extracts in Australia from some of the healthiest calendula flowers available, grown organically using bio-dynamic practices, sustainably here on our farm in the Adelaide Hills.



Calendula Oil 125ml

100% Calendula

What is it for and what does it do ?

Calendula oil is a very traditional extract made from English marigold flowers. Calendula oil has been generally proven very safe. It has been used on the skin for mild eczema, dermatitis, psoriasis, mild burns, scars, grazes, sun damage, rashes and small wounds. The natural chemicals found in calendula flowers have been shown to accelerate the epithelialisation of connective tissue, which in short means that it encourages the growth of new healthy surface tissue. The salicylates in Calendula Oil can help greatly to remove the scale of psoriasis and pityriasis. The carotenoids in Calendula Oil also encourage healthy new tissue growth so that as the psoriasis scale is removed, the skin is in better shape. Calendula Oil also makes a fantastic skin cleanser and facial makeup remover and is excellent on mild burns or following over-exposure to the sun. Calendula has been used internally as a natural alternative to aspirin.



How do I use it ?

For general skin care use a small amount of the oil massaged into the skin. As a facial treatment, apply roughly 10 drops to your hands and gently massage in. For use on grazes and bad eczema or psoriasis the oil can simply be 'drizzled on' and allowed to soak in. Removing psoriasis scale will take up to a week with at least one application per day. Two applications per day is more effective. For use with burns it is wise to remove the heat from the burn using ice, cold running water, or fresh aloe gel prior to applying the Calendula Oil. Application of the Calendula Oil will allay a lot of pain in the burn due to the presence of naturally high salicylate components.

Does it have any distinctive features ?

Roseneath Calendula Oil is made using freshly dried whole Calendula officinalis flowering tops. These flowers are grown organically on our farm over the winter and spring. The flowering tops are hand harvested and shade dried before being infused into oil during summer using a unique solar powered extraction process. Roseneath Calendula Oil has been made using food grade ricebran oil. This captures all of the flowers phytochemicals intact and minimizes the heat that the extract is exposed to. The oil is then pressed off and subsequently utilised in the production of Roseneath products.

Is there a Roseneath alternative to this product ?

Roseneath makes a range of calendula products. There are varying levels of calendula content from product to product. The best way to select the most suitable product for the body is to look at our comparison chart, found at the front of this chapter.

What other brands can I compare this product to ?

There are a variety of calendula products available in the marketplace. Very few of them are made with completely natural organic ingredients or with the high levels of calendula extract that Roseneath uses. Organic Calendula extracts are generally only found in more expensive products and generally in much lower amounts.

Why would I buy this Roseneath product over the other brands ?

Most competing products are priced much higher than Roseneath Organics products. This is not a diluted down product. We are committed to maximizing the amount of organic calendula extract found in our formulations to ensure that the products perform correctly. Some brand-name products contain 4-5% calendula extract. Roseneath products start at 11% and go all the way up to 100% calendula extract, as found in our Calendula Oil.

Are there any cautions I should be aware of when using this product ?

Calendula Oil contains high levels of natural aspirin compounds known as salicylates. It is therefore recommended that someone with an aspirin allergy or salicylate sensitivity avoid the use of Calendula Oil both internally and externally.

Calendula Oil Contains ...

100% cold infused oil from 1:1 strength, eight week, active cold infusion prepared traditionally using only organically grown Calendula officinalis flowering tops, high quality food GM Free Ricebran oil and sunlight.

Calendula Lotion 125ml and 500ml

What is it for and what does it do ?

Calendula Lotion is a light and highly anti-oxidant lotion that is generally suitable for use of the hands, body, face or hair. The lotion moisturises effectively and leaves the skin feeling silky to the touch.

Calendula Lotion is excellent for after-sun care and weather exposure..

32% Calendula

How do I use it ?

Calendula Lotion is applied directly to the skin on any part of the body. Only a small amount is required as the lotion spreads very well. The lotion is quite light but has a creamy consistency and will leave a silky feeling once applied. Calendula Lotion can be used on damp hair as a conditioning treatment. Apply a very small amount to damp hair and brush through to help control split ends and flyaway hair. Using the lotion in the hair will also aid certain scalp issues and will leave the hair feeling lush.

Does it have any distinctive features ?

Roseneath Calendula Lotion contains 32% calendula extract. This lotion is made using Rose, Witch Hazel and German Chamomile distillates, unlike most commercial lotions that are made using water and thickeners such as stearic acid as the major ingredients. Calendula Lotion contains high levels of anti-oxidants including vitamin C, vitamin E and grape seed extract. This lotion may be used as a hair conditioning treatment following shampoo.



Is there a Roseneath alternative to this product ?

Roseneath makes a range of calendula products. There are varying levels of calendula content from product to product. The best way to select the most suitable product for the body is to look at our comparison chart, found at the front of this chapter. Our other moisturizers of similar consistency are Skin Feast for body; or Retinox and Replace for face (see Emerging World section).

What other brands can I compare this product to ?

There are a variety of calendula products available in the marketplace. Very few of them are made with completely natural organic ingredients or with the levels of calendula extract that Roseneath use. Organic Calendula extracts are generally only found in more expensive products and generally in much lower amounts.

Why would I buy this Roseneath product over the other brands ?

We are committed to maximizing the amount of organic calendula extract found in our formulations so as to ensure that the products perform correctly. Some brand-name products contain 4-5% calendula extract. Roseneath products start at 11% and go all the way up to 100% calendula extract as found in our Calendula Oil.

Are there any cautions I should be aware of when using this product ?

Calendula flower contains high levels of natural aspirin compounds known as salicylates. It is therefore recommended that someone with an aspirin allergy or salicylate sensitivity avoid the use of Calendula Lotion.

Calendula Lotion Contains ...

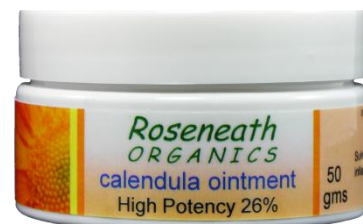
GM Free Ricebran Oil Extract of Organic Calendula (Natural vitamin A) Rose, German Chamomile and Witch Hazel Distillates (Paraben Free) Non-GM Lecithin Ethanol (natural) Coconut & Almond Oil Extracts Benzoin and Myrrh Gum Extracts Xanthan Gum (Food Grade from Ferment) Wheatgerm Oil (Natural Vitamin E) Ascorbic Acid (Natural Vitamin C) Citrus Seed Extract Guar Gum Arrowroot Lactic Acid Sodium Hyaluronate Rosemary Extract

Calendula Ointment 50gm

26% Calendula

What is it for and what does it do ?

This is a beeswax based ointment that does not contain water. It provides a stable water repellent boundary which can help protect skin against exposure to daily wear and tear. It contains 26% organic Calendula Oil to encourage effective tissue repair in cases of eczema, psoriasis or dermatitis. It does not contain any essential oils but does contain a broad array of essential fatty acids known to assist in the repair of damaged skin tissue. This ointment is useful for protection from urine irritation as occurs in nappy rash.



How do I use it ?

The ointment may be applied straight to the skin. It spreads well and a small amount can cover large areas of skin. It can be massaged into the skin or may be left to slowly absorb. Letting the ointment absorb slowly can be useful in cases of heavy psoriasis scale. The application of an ointment can be difficult on sensitive and delicate areas. In these cases the ointment can be pre-softened, prior to application, by working it on the palm of the hand.

Does it have any distinctive features ?

Roseneath Calendula Ointment contains high levels of active calendula extract. It does not contain any added essential oils.

Is there a Roseneath alternative to this product ?

Roseneath makes a range of calendula products. There are varying levels of calendula content from product to product. The best way to select the most suitable product for the body is to look at our comparison chart, found at the front of this chapter.

Calendula Ointment contains no essential oils. If essential oils are not an issue the alternatively our most similar other ointment is Calendula Orange and Cedarwood Ointment (see Mixed Products section).

What other brands can I compare this product to ?

There are a variety of calendula products available in the marketplace. Very few of them are made with completely natural organic ingredients or with the levels of calendula extract that Roseneath use. Organic Calendula extracts are generally only found in more expensive products and generally in much lower amounts.

Why would I buy this Roseneath product over the other brands ?

It contains a high level of organic calendula and is all natural. Roseneath ointments have a relatively light and fluffy texture when compared to most other beeswax based ointments. We are committed to maximizing the amount of organic calendula extract found in our formulations so as to ensure that the products perform as expected. Some brand-name products contain 4-5% calendula extract. Roseneath products start at 11% and go all the way up to 100% calendula extract as found in our Calendula Oil.

Are there any cautions I should be aware of when using this product ?

Calendula flower contains high levels of natural aspirin compounds known as salicylates. It is therefore recommended that someone with an aspirin allergy or salicylate sensitivity avoid the use of Calendula Ointment.

Calendula Ointment Contains ...

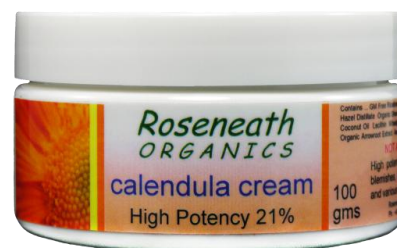
Raw Beeswax GM-Free Rice Bran Oil Organic Calendula Flower Extract
Cold Pressed Organic Coconut Oil Cold Pressed Apricot Kernel Oil
Cold Pressed Sweet Almond Oil Cold Pressed Macadamia Oil
Kosher Food Grade Vegetable Glycerine

Calendula Cream 100gm

21% Calendula

What is it for and what does it do ?

This is an old fashioned French style flower distillate based cream butter. Roseneath Calendula Cream contains over 21% Organic Calendula Oil. Calendula Cream is rich in organic fats such as cocoa butter and shea butter and is ideal for use as a face or general body moisturiser. Calendula Cream has been shown to be very helpful in the management of skin disorders such as eczema, psoriasis and dermatitis. Roseneath Calendula Cream is also excellent for use on the skin following shaving or on minor burns and sun damaged skin that has been cooled down with ice, cool running water or fresh aloe prior to application.



How do I use it ?

Roseneath Calendula Cream is a heavier style cream butter and is best applied onto damp skin following a bath or shower. A small amount of the cream will spread a long way on damp skin. In cases of eczema or psoriasis one application a day is generally sufficient.

Does it have any distinctive features ?

Roseneath Calendula Cream is made in a traditional manner using Witch Hazel, German Chamomile and rose flower distillates. Our Calendula Cream contains one of the highest concentrations of calendula available off the shelf in Australia. Roseneath Calendula Cream does not contain any added essential oils but does include fresh organic rosemary, vitamin C and myrrh extract to help with tissue regeneration.

Is there a Roseneath alternative to this product ?

Roseneath makes a range of calendula products. There are varying levels of calendula content from product to product. The best way to select the most suitable product for the body is to look at our comparison chart, found at the front of this chapter.

Our Rosemary and Lavender Cream is another moisturizer of similar consistency (see Emerging World section).

What other brands can I compare this product to ?

There are a variety of calendula products available in the marketplace. Very few of them are made with completely natural organic ingredients or with the levels of calendula extract that Roseneath use. Organic calendula extracts are generally only found in more expensive products and generally in much lower amounts.

Why would I buy this Roseneath product over the other brands ?

We are committed to maximizing the amount of organic calendula extract found in our formulations to ensure that the products perform as expected. Some brand-name products only contain 4-5% calendula extract. Roseneath products start at 11% and go all the way up to 100% calendula extract as found in our Calendula Oil.

Are there any cautions I should be aware of when using this product ?

Calendula flower contains high levels of natural aspirin compounds known as salicylates. It is therefore recommended that someone with an aspirin allergy or salicylate sensitivity avoid the use of Calendula Cream.

Calendula Cream Contains ...

GM-Free Rice Bran Oil Organic Calendula Extract Rose Distillate Organic Cocoa Butter
German Chamomile Distillate Witch Hazel Distillate Ethanol Organic Shea Butter Raw Bees Wax
Kosher Food Grade Vegetable Glycerine Organic Rosemary Extract Organic Palm Oil
Organic Coconut Oil Lecithin Gum Benzoin Extract Myrrh Gum Extract Xanthan Gum
Coconut and Almond Oil Extracts Wheatgerm Oil Citrus Seed Extract Vitamin C (Ascorbic Acid)
Borax Grape Seed Extract Arrowroot

Calendula Orange and Cedarwood Soothing Ointment 50gm

What is it for and what does it do ?

Calendula Orange and Cedarwood Ointment is reasonably light on the skin and is readily absorbed when used in moderation.

This ointment has been formulated to be soothing to the skin and to provide a stable, protective, waterproof boundary.

Calendula assists the repair of surface tissue and thus can be helpful in cases of eczema and dermatitis. Sweet Orange Oil helps to re-hydrate skin; to strengthen tissue and to reduce fine lines and wrinkles. Cedarwood Oil is mildly anti-inflammatory. Together Sweet Orange and Himalayan Cedarwood encourage tissue repair and a desirable increase in local immune function.

20% Calendula



This ointment is great for use on hands and feet exposed to excess moisture and it makes an excellent lip balm. This ointment can also be very useful on sun damaged skin as it contains 20% calendula extract.

How do I use it ?

Simply apply the ointment as required and massage in until smooth.

When the ointment is too stiff to be applied to delicate areas, simply pre-soften by working some of the ointment around in the palm of your hand.

Does it have any distinctive features ?

This ointment contains 20% organic calendula flower extract and does not have any water content.

Is there a Roseneath alternative to this product ?

There are a few Roseneath alternatives to this ointment.

Calendula Ointment, Calendula Cream or Rosemary and Lavender Cream would be suitable alternatives to Calendula Orange and Cedarwood Ointment, but keep in mind that an ointment will provide a superior moisture seal and is a more robust skin protection than a cream.

In cases where it is intended that that Calendula Orange and Cedarwood be used on the feet then a suitable alternative would be the Lemonbalm Tea Tree and Eucalyptus Ointment.

What other brands can I compare this product to ?

There are many ointments available in the marketplace. Few have high active levels like Roseneath Organics products.

Why would I buy this Roseneath product over the other brands ?

Roseneath Organic ointments are made in a traditional way and have a fluffier and lighter feeling than most commercially available ointments. Roseneath ointments are very easy to spread, are made using raw natural materials and do not contain any synthetic preservatives or cheap fillers.

Are there any cautions I should be aware of when using this product ?

Calendula flower contains high levels of natural aspirin compounds known as salicylates. It is therefore recommended that someone with an aspirin allergy or salicylate sensitivity, avoid the use of Calendula Orange and Cedarwood ointment. When evaluating Calendula Orange and Cedarwood Ointment for use the usual common sense decisions apply with respect to allergies and sensitivities to certain natural ingredients or nuts. If uncertain then it is recommended that a skin patch test be carried out to ascertain if any allergic potential exists.

Calendula Orange and Cedarwood Ointment Contains ...

Raw Beeswax GM-Free Rice Bran Oil Organic Calendula Flower Extract Organic Coconut Oil
Cold Pressed Apricot Kernel Oil Cold Pressed Sweet Almond Oil Cold Pressed Macadamia Nut Oil
Cold Pressed Sweet Orange Essential Oil Steam Distilled Himalayan Cedarwood Essential Oil

Calendula Foaming Wash 150ml

What is it for and what does it do ?

This is a traditional liquid soap made in the Castile tradition. The pump efficiently dispenses the liquid soap as a foam, ready for application. Calendula Foaming Wash may be used either as a gentle face & body wash Or, in larger amounts, as a shampoo. It contains 11% calendula extract which makes it excellent for managing problem skin on the scalp. It is truly effective at removing and controlling dandruff, eczema and psoriasis scale. It is gentle on the hair and will not strip valuable oils during the wash. This Calendula Wash can be combined with a high quality natural conditioner for the best results.

11% Calendula



How do I use it ?

Face & Body - Apply to skin, rub around and simply rinse off with water.
Hair - Apply a larger amount of foam to the hands and work into wet hair. Calendula Foaming Wash will lather well. Wash out by rinsing with clean water. Use of a conditioner should not be required. If required a very small amount of the Calendula lotion can be combed through the hair to provide moisture and protection, as well as to nourish the scalp.

Does it have any distinctive features ?

Roseneath Calendula Foaming Wash is actually made from pure organic calendula oil as found in all Roseneath calendula products. The oil is saponified using lye in a traditional Spanish Castile process and then aged before being bottled. This product is not a shampoo base with some calendula added for effect. This product has been found excellent for the control of persistent dandruff, eczema and psoriasis of the scalp.

Is there a Roseneath alternative to this product ?

Roseneath makes a range of calendula products. There is a varying level of calendula content from product to product. The best way to select the most suitable product for the body is to look at our comparison chart, found at the front of this chapter.

Our other face cleansers are Soft Face Wash and Gentle Toner Cleanser (see Emerging World section). This is our only product for general hair washing (see Organic Products section for Head Lice Lotion).

What other brands can I compare this product to ?

There are a variety of natural liquid soaps available in the marketplace. Very few of them are made with completely natural organic ingredients or with the same level of calendula extract as is Calendula Foaming Wash. Organic calendula extracts are generally only found in more expensive products and generally in much lower amounts.

Why would I buy a Roseneath product over the other brands ?

At this stage we are unaware of any existing commercial products that utilise calendula flower for its healing effects on the scalp and the control of dandruff, eczema or psoriasis.

Are there any cautions I should be aware of when using this product ?

Calendula flower contains high levels of natural aspirin compounds known as salicylates. It is therefore recommended that someone with an aspirin allergy or salicylate sensitivity avoid the use of Calendula Foaming Wash.

Calendula Foaming Wash Contains ...

Water GM-Free Rice Bran Oil Organic Calendula Extract Kosher Food Grade Vegetable Glycerine
Ethanol Organic Coconut Oil Lye Flake Borax Sweet Almond Extract Coconut Oil Extract
Citrus Seed Extract (All Free Potassium Hydroxide KOH is converted during Saponification)

Calendula Product Testimonials

Calendula Oil

"I have ordered the Calendula Oil from you previously & I really enjoy your Product" **Trish**

"I have been using your product for about 3 months and I am very impressed. I initially used it for irritated skin, rashes / insect bites / dry skin etc but started using it as a cleanser as well. It has helped my sensitive skin immensely. Thank you for your hard work I am spreading the word."
Jennifer V

Calendula Lotion

"I love the Calendula lotion! The product feels great & one of the best lotions I have tried so far. Many thanks for developing such great products." **Conni, SA**

"Very nice product to use" **Joanne**

"You've been so very kind just recently in helping me with my query about dermatitis and perioral dermatitis. I've taken up your suggestion of using the Calendula lotion on my face. Wow what a difference! I don't even use the cream the doctor prescribed for me.... thanks again for all of your help." **Susan, email**

Calendula Cream

"...the jar of Calendula cream you gave me I noticed a big difference in the skin on my hands almost immediately. I think all natural products are the best." **Pat, SA**

"Thanks so much. Your calendula cream is definitely the best cream I have ever used." **Lesley, Adelaide**

Melissa Products



MELISSA	Face	Body	Genitals	Hair	Herpes	Sleep	Agitation	Mild Anxiety	Dementia
Melissa Oil	✓	✓	✓		✓	✓	✓	✓	✓
Cold Sore Salve	✓	✓			✓				
Lemonbalm Tea Tree and Eucalyptus Ointment	✓	✓	✓		✓				
Head Lice Lotion				✓					

Melissa, aka Lemon balm, is calming to the central nervous system, astringent, antiseptic and healing. Melissa is also strongly anti-viral. Melissa is rich in naturally occurring polyphenol chemicals. Most natural polyphenols are anti-viral. The polyphenol compounds found naturally in melissa directly fight the herpes simplex virus responsible for cold sores. Research has shown that the use of melissa preparations on cold sores and on genital herpes sores can help reduce the healing time markedly. Melissa preparations are often recommended by herbalists for managing difficult skin problems and were widely by both the ancient Greeks and Romans as part of a surgical wound dressing. The word melissa comes from the Greek for 'honey bee' and the plant provides excellent bee fodder, hence its' ancient name of *bee balm*.

Melissa Oil 125ml

100% Melissa

What is it for and what does it do ?

Melissa Oil, an oil based extract of Lemonbalm (*Melissa officinalis*), has been used for many centuries as an effective nervine and natural aid to sleep and relaxation.

Melissa has also shown to be very effective for the control of agitation in people with dementia and age related degenerative disorders. Nursing staff have reported to Roseneath that over a three month period, the use of the Melissa oil has resulted in 70% reduction in agitation for dementia patients. Patients appear more relaxed and happy following use and this can alleviate the need for tranquilisers and sedatives in difficult patients.

Melissa is also quite high in natural poly-phenols that make the oil extract very effective as a topical treatment for shingles and genital herpes.

Customers have told us that they have used Melissa Oil to successfully heal ulcerated insect and spider bites. Melissa Oil has also been used very effectively to reduce the painful swelling and histamine response associated with bee stings. This adds credibility to historical stories about using Melissa on bites.

We also have many clients who have used Melissa Oil to overcome allergic skin reactions when they have responded adversely to unspecified skin care products. Melissa oil applied to the skin generally relieves uncomfortable irritated skin and reduces any inflammation markedly.



How do I use it ?

For sleeping issues, simply massage a small amount of oil (1-2ml) into soft skin such as the forearm, abdomen, back or inner thigh. Most people find that the best time to apply the oil is about 30-60 minutes prior to bed time. The effect of the oil seems to last about 8 hours from one simple application.

For irritated skin or herpes lesions, simply apply a small amount of the oil to the skin and gently rub in. For minor anxiety issues simply apply some oil to soft skin as and when required.

For bee stings and insect bites apply liberal Melissa to the bite/sting area and do not rub in..allow to soak. In this situation it is also recommended to wet a cotton wipe or tissue with Melissa oil and to hold the wetted wipe/tissue against the bite/sting for at least 10 to 15 minutes.

Does it have any distinctive features ?

This is 100% full strength herbal extract as we manufacture it for inclusion as a raw ingredient into our other products.

Is there a Roseneath alternative to this product ?

As an alternative, it is possible to use the Lemonbalm Tea Tree and Eucalyptus Ointment. The ointment has a heavier skin feel and is 14% Lemonbalm extract. The ointment would be an effective substitute to the Melissa Oil in cases of shingles and skin related problems. The ointment would not be effective for use in sleeping or agitation problems. The ointment can help to a degree with insect bites/stings but the Melissa Oil seems to be more effective.

What other brands can I compare this product to ?

We are not aware of other Melissa Oil products on the market within Australia. Some manufacturers are offering sorbolene style creams containing small amounts of the essential oil of Lemonbalm. There are a large number of tranquiliser, anti-anxiety and sedative products that are used in nursing homes around Australia.

Why would I buy this Roseneath product over the other brands ?

Lemonbalm essential oil style creams tend to be expensive and no more effective than using our infused oil.

In fact, our infused oil is more effective. Essential Oil of Lemonbalm can be very expensive and priced somewhere between AUD\$10,000 and AUD\$14,000 per kg of essential oil. This cost for the raw essential oil gives you a very good idea of how much essential oil typically goes into commercial cream products.

The Roseneath Melissa Oil is considered excellent value for money in comparison to other products.

Melissa Oil can provide a solution for many aged people in caring institutions, as it can help with poor sleep quality and other sleeping issues. Melissa oil deals with many of these common life issues without ill side effects.

Are there any cautions I should be aware of when using this product ?

Using Melissa Oil for sleeping problems has the same issues involved with it as exist when using pharmaceuticals.

If it used for a prolonged and extended period then individuals may have trouble resuming normal sleep patterns.

We have discovered that a small percentage (~3%) of individuals find that the Melissa Oil makes them feel a little hyper rather than relaxed and sleepy. For some of these individuals they find that applying the Melissa Oil in the morning gives them a busy day and they naturally feel more tired and sleepy in the evening.

Melissa Oil Contains ...

Undiluted 1:1 Volumetric Infusion of Organic Flowering Lemonbalm Tops in GM-Free Ricebran Oil

Cold Sore Salve 20gm

What is it for and what does it do ?

Roseneath Cold Sore Salve contains broad spectrum anti-virals and L-lysine in a soft base of raw beeswax, apricot, coconut, GM-Free Rice Bran and sweet almond oils. Cold Sore Salve stops the itch and encourages healing with rapid tissue repair. Roseneath Cold Sore Salve can be applied to either facial or genital lesions.

How do I use it ?

Apply a small smear of salve to the itchy area or expected lesion. Do not over apply this salve. One application twice a day is adequate. Too much applied to the lips too frequently can result in blistering.

Does it have any distinctive features ?

This product is much loved by those who have discovered it. For these customers it can mean no more endless years of every photograph having a cold sore in it.

Is there a Roseneath alternative to this product ?

The Lemonbalm Tea Tree and Eucalyptus Ointment can be used very effectively on cold sores or genital herpes lesions by those who get them relatively infrequently. For more serious outbreaks or for long term cold sore sufferers, it is suggested that the Cold Sore Salve be used.

For people with genital lesions a better choice is the Melissa Oil. This is much more easily applied internally for women and can be easily massaged into the skin. Melissa Oil is also non-irritating on sensitive skin.

What other brands can I compare this product to ?

There are many cold sore remedies available in the marketplace both natural and synthetic.

Why would I buy this Roseneath product over the other brands ?

Roseneath Cold Sore Salve attacks the virus in many ways using a variety of natural active ingredients.

This makes the Cold Sore Salve broadly effective over a wide variety of viral strains.

People who use this product regularly report to us that, in their opinion, it is much more effective than any other product they have ever used. Customers experience faster healing and in some cases, their cold sore has almost disappeared in 2 days.

This is a truly effective, entirely natural herpes treatment and can be used for lip sores, facial sores and also to relieve genital herpes lesions. This product does not contain any synthetic anti-viral drugs and is an all natural product. When compared to most commercial cold sore treatments, this product wins hands down. One little tub will usually last for several years. It will not go off or harden prematurely as other mainstream products do.

Are there any cautions I should be aware of when using this product ?

Cold Sore Salve can feel *bitey* on delicate skin and should be used with caution on sensitive areas and genitalia.

As this product is associated with a transmissible virus, we would not recommend the sharing of a container between individuals who may have different strains. Contracting multiple herpes strains may only make the problems worse.

If the product is to be used for genital herpes, then we also suggest that a second container be purchased for use on oral lesions. For genital herpes we would recommend the use of Roseneath Melissa Oil

*Broad Spectrum
Natural Anti-Virals*



Cold Sore Salve Contains ...

Raw Beeswax Organic Coconut Oil GM-Free Rice Bran Oil Organic Lemonbalm Extract
Organic Saint John's Wort Extract Essential Oils of Eucalyptus, Lemon, Neem, Turpentine Bush
& Organic Tea Tree Cold Pressed Apricot and Sweet Almond Oils Water Ethanol
Organic Astragalus Extract Organic Echinacea purpurea Extract Witch Hazel Extract
Myrrh, Benzoin and Labdanum Extracts Cats Claw Extract Shiitake Mushroom Extract
Organic Elderberry Extract Peppermint Menthol White Camphor Salicylic Acid L-Lysine
Guar Gum Borax Apple Cider Vinegar

Lemonbalm Tea Tree and Eucalyptus Healing Ointment 50gm

14% Organic Lemonbalm
6% Organic Tea Tree

What is it for and what does it do ?

Lemonbalm, Tea Tree and Eucalyptus ointment is a delicate ointment, that is readily absorbed by the skin when used in moderation.

The healing properties of this ointment provide a stable, protective, waterproof boundary. The ointment can be helpful in cases of difficult and stubborn sores, acne, cold sores, herpes lesions, ulcers, painful burns, Staphylococci and other bacterial lesions, ulcers, insect bites, chicken pox, warts, corns, hives, boils, shingles, lichen based eczema, dry skin, chapped skin, dull skin, fungal related dermatitis, chilblains, ringworm and other parasites, tinea, fungal problems, weak and brittle nails, inflamed insect bites, mosquito bites and bee stings.

Lemonbalm when applied topically helps fight herpes simplex I and II; helps to combat warts and other fungal parasites; encourages local healing; is anti-inflammatory; reduces acne infection; soothes eczema and rash; improves the healing of cuts and sores; prevents infection in wounds; helps soothe insect bites and stings.

Some of our customers' children referred to this product as 'Mum's Magic Ointment'.

How do I use it ?

Simply apply the ointment as required and massage in until smooth. When the ointment is too stiff to be applied to delicate areas then simply pre-soften by working some of the ointment around in the palm of your hand.

Does it have any distinctive features ?

This ointment contains 14% Organic Lemonbalm extract, 6% Organic Tea Tree Oil and has no water content.

Is there a Roseneath alternative to this product ?

A Roseneath product that could provide some of the properties of the Lemonbalm Tea Tree and Eucalyptus Ointment is the Melissa Oil. Melissa Oil is great for soothing irritated skin.

If you are using the Lemonbalm Tea Tree and Eucalyptus ointment for relief from cold sores or genital herpes lesions and you need an alternative then the Roseneath Cold Sore Salve would be the best choice. The Lemonbalm Tea Tree and Eucalyptus Ointment has less bite on the skin than the Cold Sore Salve.

What other brands can I compare this product to ?

There are many ointments available in the marketplace. Few have high active levels like Roseneath Organics products.

Why would I buy this Roseneath product over the other brands ?

Roseneath ointments are made in a traditional way and they generally have a fluffier and lighter feeling than most commercially available ointments. Roseneath ointments are very easy to spread and are made using raw natural materials and do not contain any synthetic preservatives or cheap fillers. The herbal content incorporated into Roseneath products is generally much higher than found in most other available product brands.

Are there any cautions I should be aware of when using this product ?

We are not aware of any precautions with this product. When evaluating Lemonbalm Tea Tree and Eucalyptus Ointment for use the usual common sense decisions apply with respect to allergies and sensitivities to certain natural ingredients or nuts. If uncertain then it is recommended that a skin patch test be carried out to ascertain if any allergic potential exists.

Lemonbalm Tea Tree and Eucalyptus Ointment Contains ...

Raw Bees Wax Organic Coconut Oil GM-Free Rice Bran Oil Organic Lemonbalm Extract
Organic Australian Tea Tree Oil Australian Blue Gum Eucalyptus Oil Cold Pressed Lemon Oil
Cold Pressed Apricot Kernel Oil Cold Pressed Sweet Almond Oil Cold Pressed Macadamia Nut Oil



All Natural Head Lice Lotion 125ml and 500ml

What is it for and what does it do ?

This lotion is gentle on both scalp and hair and will not strip the hair of oils. This product will work in all climatic zones around Australia. Roseneath Head Lice Lotion will provide many days of protection following treatment and combats head lice in several ways. Paramagnetic minerals in this lotion cleverly help active ingredients to penetrate both the body of the louse and the shell of the eggs glued to the hair shaft. Once the louse or egg has lotion on it, it will die. The lotion also attacks the lice through the principle of suffocation by coating them with a thin layer of air restrictive lotion. The lotion will also break down egg cement that glues the eggs to the hair shaft, which means that hours spent combing is a thing of the past.

How do I use it ?

Shake well before use. 125ml treats approx 1-2 heads. 500ml treats approx 6-8 heads. Apply lotion to DRY hair. Do not use on wet hair. Use enough lotion to thoroughly wet both hair and scalp. Ensure that lotion is rubbed into the hair behind the ears which is where eggs tend to accumulate. Leave the lotion in the hair for a minimum of three hours. The use of a shower cap over the hair improves the lotion's effectiveness. Remove the lotion from the hair by washing out with regular shampoo. It may be necessary to treat twice over a period of a week to ensure total kill and removal of both lice and eggs. For serious problems or to break down heavy egg cement, it is suggested that the lotion be left in the hair overnight and washed out the following morning.



Does it have any distinctive features ?

This lotion has been shown 96% effective by student trial at a South Australian University. A full copy of the report transcript is available on our website at www.roseneathorganics.com. The Roseneath Head Lice Lotion stays where it is put and does not tend to run all over the place and down the neck etc. The Roseneath Head Lice Lotion is in many cases an effective one treatment solution to head lice and eggs. This product has been investigated extensively by a large metropolitan council in Adelaide and has become a preferred product that is mentioned on their website, sold at their council offices and recommended to local parents and schools. Several South Australian schools issue our lotion to students as their preferred treatment for head lice.

Is there a Roseneath alternative to this product ?

No. Currently, this is our only Head Lice product. It provides a complete solution.

What other brands can I compare this product to ?

There are many brands of head lice treatment available in the market place. Very few of them can claim to be 96% effective and University trialed. Very few of them work reliably and repeatedly.

Why would I buy this Roseneath product over the other brands ?

This is an all-natural product with a 96% success rate. It also kills the eggs and dissolves egg cement. This means less checking of hair and less time combing for eggs. Our customers tell us ... 'This stuff actually works!' ... as do all of our other Roseneath products. This Head Lice Lotion is ideal for people with dreadlocks as they can effectively treat the hair without having to cut.

Are there any cautions I should be aware of when using this product ?

We are not aware of any cautions when using this product. Of course when evaluating Roseneath Head Lice Lotion for use, due consideration should be given to known allergies and sensitivities. When using this lotion the scalp will feel cold and lice will go crazy. This feels a little weird but is normal. ☺

All Natural Head Lice Lotion Contains ...

Water Para-Magnetic Mineral Extract Cold Pressed Neem Oil Organic Tea Tree Essential Oil
GM-Free Rice Bran Oil Vegetable Glycerine Ethanol Lecithin Sesame Oil Flaxseed Oil
Organic Echinacea Extract Spike Lavender Essential Oil Organic Garlic Extract
Organic Lemonbalm Extract Organic Roman Wormwood Extract
Essential Oils of Rosemary, Star Anise and Citronella Pine Oil Extract Wild Thyme Essential Oil
Essential Oils of Himalayan Cedarwood, Sweet Orange and Eucalyptus Guar Gum Xanthan Gum

Melissa Product Testimonials

Melissa Oil

"My brother contracted meningitis when he was 9 months old and as a result suffered permanent brain damage. His current intellectual level is that of a 2 year old, he often throws tantrums and refuses to get into the car or do certain things. He also displays some characteristics of autism. I convinced my mother to try Melissa Oil one day before I was taking him to disabled surfing. What normally took 45 mins of convincing him to get into the car was instantaneous. He happily got in and displayed no signs of the agitation and anxiety he normally does.

My mother thought if it was just a coincidence, so we have tested the theory on numerous occasions with the same result. The incidents of displaying anxiety have decreased approximately 95% which makes my elderly parents lives so much easier.

Thankyou for producing such an amazing product. You really have changed the lives of my family."

Catherine , NSW

"I just wanted to thank you for your products, especially your melissa oil. I have had astonishing results, both on my skin and in my person! I had a random shingles outbreak-never had one before, and I had your lemon balm and eucalyptus balm on hand, which kept it at bay and when I received my melissa oil and applied it-it all disappeared in 3 days!!! I am calmer, I sleep better than I have in years (I have a 14mth old baby and haven't sleep for more than 3 hours in a row for all that time) and I feel so relaxed and confident, I barely recognize myself. Thank you, thank you, thank you!!"

Margaret M, NSW

"Had fantastic results with my mum who has Alzhiemers helps her sleep and calms her down at sundowner and other aggressive times also friends used it for insomnia good results do you promote it in WA? i am telling people about the product i work as an agency nurse in nursing homes i will be mentioning the great results with my mum" **Linda R, WA**

"My mother introduced me to Melissa Oil for helping me to sleep - fantastic!" **Dianne**

"I have used Melissa Oil and find it very good." **Carolyn, Flaxley, SA**

"My massage therapist, Deb H, recommended your Melissa Oil to me for Insomnia & anxiety. She gave me some to try & I recently ordered some from you. I have found it very beneficial & have highly recommended it to my family & friends. Thank you for such a great product!" **Kerry, One Tree Hill, SA**

"your Melissa oil is fantastic - my partner who has trouble sleeping and taking tablets has now switched to your oil and am ordering today another 2 bottles (one for his friend) the two biggest non believers of anything natural ... very impressed with your products" **Margaret, West Lakes, SA**

"..The melissa oil seems to be helping a lot I have to say - sleeping much more soundly through the night..." **Nance H. Adelaide SA**

"In April 2011 my horse was diagnosed with a dermatitis condition called rain scald. It is itchy, raw and hair loss occurs and is very contagious. She responded well to antibiotics and a anti fungal shampoo. The problem the shampoo stung her and she became difficult to handle.

In May she developed more dermatitis on her back. More shampooing with good results. A third bout happened. I certainly did not enjoy treating her and she became very wary of everything I did with her.

I saw Adam's brochure on his horse products and i thought there must be another way to treat this dermatitis that would cause less pain to all concerned. I talked to Adam about the situation, and he

suggested Melissa oil for its antifungal, bacterial, viral qualities. Initially it worked well and she was receptive to treatment at last, but in July with heavy rain (a cause of fungal flare ups,) more dermatitis appeared to a larger degree on her back. I was beginning to think will this ever end! Adam suggested using Lemon Balm Tea Tree and Eucalyptus ointment combined with Melissa Oil. It was easy to apply, more comfortable for my horse and it reinstated her confidence in me handling her without pain. On one hand I thought it was working, but on the other hand I thought not. I thought the dermatitis was spreading due to such hair loss, so I called the vet. The vet took one look and said whatever you are using it has fixed the problem and to keep using the paste! Thank you Adam for all your help. I have recommended your products." **Philippa Adelaide Hills SA**

Cold Sore Salve

"Roseneath Cold Sore Salve is a great alternative to chemical cold sore creams. Roseneath Cold Sore Salve soothes the itching of my cold sores and reduces the time I have the cold sores. I have also found it useful to eradicate pimples! Anyone that has been a life time sufferer of cold sores like myself will love this product." **L.Josephs, QLD**

"Hi, I got the cold sore salve ... so now i am not worried anymore when the cold sore come up!!!! Thank you." **Soledad, S.A.**

"I found your cold sore balm excellent." **Jean B**

"I love the cold sore balm." **Anita H, Sydney**

"I have suffered cold sores for over 30 years and no product has offered such relief and fast healing as your product. My cold sores only last 2-3 days now, are smaller and the scab is a lot lighter in colour so it makes it less obvious. The cold sore also heals better and doesn't leave such a scar/red mark. I just wanted to say a huge thank you about your salve - its brilliant!!!" **Sally**

"I have had cold sores since I was a little child. I have also been immune-compromised for over 8 years as the result of having my thymus gland removed. I have tried l-lysine, expensive formulations, cheap formulations, alcohol wipes...the lot. I purchased the Roseneath Cold Sore salve as it was locally produced and had been recommended. Using just a small dab of the salve works a treat. I think it is a wonderful product." **Noelene, Adelaide**

"The cold sore ointment also works wonders on tinea. In the same amount of time as a shop bought chemical base tinea remover works, Roseneath Organics had cleared up the problem without adding a multitude of chemicals to skin." **Katherine, Adelaide**

"...Feedback on the coldsore ointment. My friend Karin said it works well for her and her daughter now uses it also, with great satisfaction." **Suzanne H. Glenside SA**

Lemon Balm Tea Tree and Eucalyptus Ointment

"..After a splinter in my hand was giving me lots of pain I tried your Lemonbalm Tea Tree and Eucalyptus ointment and got immediate relief. The wound healed very quickly...I really like your stuff!!!" **Bohdan D. Prospect SA**

"I had numerous skin cancers removed from my hands, face and ears. This was a successful treatment but on one hand the spots removed were quite extensive and the healing process (an area the size of a 20c piece) was extremely slow. Within 48hrs, the skin on the hand was regenerating and within a week it was completely healed. I cannot but recommend this product highly enough." **D.Philip, Evanston Park SA**

Head Lice Lotion

"I use your scar serum and nit formula on my children. We love your products." **Dani**

"I have 6 children and have had a huge problem with head lice and their eggs. Every month i spend a ridiculous amount on trying to eradicate the problem. I have used all natural head lice lotion and couldn't believe the outstanding results. I wish i could of found this product much sooner. Your product is fantastic and i will continue to use it in the future." **Debbie, Mount Druitt, NSW**

"You can not compare your product with the chemical or natural products available. This time we have finally broken the cycle of the nits. Please do not change the strength or the ingredients as we have been very happy with the results. We have passed the product onto my sister down in Corrimal NSW. Keep up the good work." **Paul and Joanna B. Botobolar NSW**

"The product also made the hair shiny and the smell did last for a few days (which was good). Only a few dead lice combed out after the one overnight treatment. Have used this before and its the only treatment I have tried that actually works." **Patty F. Merrimu VIC**

"Have been using the Lice Lotion for 6 months now and just wanted to tell you how fantastic I think it is. Thanks" **Leah C.**

"It's nice to have a natural product that actually works" **Kathy G. Wentworth Falls NSW**

"One bottle treated 3 kids heads once. I wrapped heads in glad-wrap for 5-6 hours and left solution in over night. After shampooing next day no lice or eggs were found. No re-treatment necessary. No further re-infestation to date. I would use this product again if needed." **SA**

"I found that this product was great and better than anything I have ever tried. I will be buying it again." **Morphett Vale, SA**

"I love not spending ages fighting my 4 ½ year old with the bug comb. Bugs and eggs washed out with shampoo, any eggs left were big enough to see and pick out with finger nails. Not an unpleasant smell like some tea tree lotions which sting your eyes and make kids gag." **O'Sullivan Beach, SA**

"Got rid of all the lice in the first treatment - excellent positive side effect - conditioned our hair beautifully. My hair looks fantastic after the treatment, shiny and full of volume - thanks guys ! All the eggs didn't come out at first but over the next few days with normal brushing and washing they pretty much were gone. Thank you and congratulations on your invention." **Tennyson, NSW**

"After months of treating head lice with preparations both 'herbal' and 'chemical'. This product is a godsend. It ACTUALLY WORKS!. All the money spent at the chemist was wasted. I wish I had known about Roseneath earlier." **Aldgate, SA**

"Thank you..wonderful..fantastic..Worked the first go..trying to get local chemist to stock it..has helped our family enormously" **Sue Adelaide SA**

"We use your head lice lotion – and it is absolutely fantastic." **Debra de C. Glenelg SA**

"Thanks. Its Great" **Sue, Frewville**

"The head lice lotion is the best product I have ever used. It absolutely works. It is money well spent. IT IS FANTASTIC" **Danielle, Ingle Farm SA**

"I just wanted to say THIS PRODUCT IS ABSOLUTELY FANTASTIC!!!!!! we only left the solution in for an hour (wrapped in glad wrap.) When she went to have a shower to wash it out I had a look

and WOW there were four lice DEAD on her scalp and the eggs were black..... I'm so excited!!! in the past 5 years alone i have spent 100's of dollars on Nit products ranging from solutions through to electronic devices, and finally I came across your solution and its FANTASTIC!!! I will not hesitate to let the school know .. I have discussed my ongoing problem with the school nurse and told her that i had tried everything and she was eagerly awaiting my success of your product. ALL THANKS TO YOUR FANTASTIC PRODUCT!!!!!" **Julie B. Shepparton Vic**



Tonic Products



Tonic Products SELECTION CHART				
Product	Colds and Flu	Digestive Problems	General Wellbeing	Immune Support
Olive Leaf Extract Mandarin + C and E	✓	✓	✓	✓
Olive Leaf Extract Double Strength	✓	✓	✓	✓
Happy Tummy Tonic		✓	✓	✓
Blood Clear Tonic			✓	✓
Cats Claw Extract	✓			✓

Roseneath Tonics reflect the individual choices that we all have available to us when making informed decisions to improve our personal health and general wellbeing.

The human body and digestive tract can be loosely described as a very complicated compost bin that provides the ideal habitat for various unwanted bacteria, viruses and other micro-organisms. Despite the fact that our bodies' intricate defenses work ceaselessly and tirelessly to clean them up, sometimes we can do with some assistance. Roseneath Tonic products can help in these situations as they have been formulated to assist the body naturally in times of stress or during challenging adverse life events.

When things are good Roseneath tonics may even help the body to perform at above optimum levels. It must be remembered however that any supplements are not a substitute for healthy food and lifestyle choices.

In order to maximize the health giving benefits of these tonic products the majority of the herb extracts Roseneath prepares and incorporates into them are done at low temperatures. This ensures that delicate or unstable heat sensitive active chemicals found naturally within the raw herb are not damaged during processing by excessive heat. Most of our competitors do not abide by these cold extraction techniques and thus the level of undenatured active ingredients found within their finished products are at levels that do not compare with those found within Roseneath tonics.



Olive Leaf Extract Mandarin 200ml and 500ml

What is it for and what does it do ?

Olive leaf extracts have been traditionally used as an aid to overcoming symptoms of colds and flu. Olive leaf extracts can also aid in better breathing and to improve the function of the lungs in problems like cystic fibrosis. Most people using olive leaf daily also find that they also experience an increase in general wellbeing and energy levels. Olive leaf extracts have been shown to improve non-specific immunity in humans, are highly anti-oxidant, aid human digestion and improve sugar levels. The best clinical trial results have been achieved when taking Olive leaf extracts in conjunction with vitamin C, vitamin E and citrus bio-flavonoids.

0.9 grams leaf per ml

How do I use it ?

Shake well before use.

We suggest commencing with 3 to 5ml daily in the morning before food.

After a couple of days move to between 5 and 10 ml daily.

The maximum suggested dose is 15 ml per day.

Feedback from customers state that they generally notice improved energy levels and an inflated sense of wellbeing within a week.

Does it have any distinctive features ?

This product is alcohol free and does not contain any added sugar.

This product is made using both warm and cold extracts of olive leaves.

This ensures that our olive leaf product contains the maximum achievable anti-oxidant and phyto-therapeutic activity.

Roseneath uses citrus seed extract as a natural preservative.



Is there a Roseneath alternative to this product ?

Roseneath Organics provides two different olive leaf products.

The Double Strength Natural Flavour version is the strongest product with an equivalent 1.8 gms of leaf per ml.

The Double Strength extract is more suitable for those individuals looking for a serious strength extract or those just looking for strong olive leaf with no added extras. The Mandarin Flavour Extract with added vitamin C and E contains an industry standard equivalent of 0.9 grams of leaf per ml. Roseneath Organics Mandarin Flavour Extract is generally suitable for daily use as a tonic by everyone.

What other brands can I compare this product to ?

There are a number of olive leaf products available commercially. Customers need to compare the equivalent amount of leaf per gram in olive leaf products to decide what suits them best. Our customers tell us they are more than satisfied with results when they are using the Roseneath product.

Why would I buy this Roseneath product over the other brands ?

The Roseneath olive leaf products have been made using two extractions from olive leaves. One is performed hot and the other is performed cold. These two extractions are then recombined to produce the final product. We are not aware of any other manufacturer that does this.

Are there any cautions I should be aware of when using this product ?

We are not aware of any cautions when taking olive leaf extracts. Some people may be allergic to citrus.

We would suggest that it is better to take a small dose over an extended period than it is to try and use mega-doses to overcome a suddenly contracted flu or virus. Either way the Roseneath extracts can be very effective.

Olive leaf extracts are non-toxic, but when killing too many pathogens too quickly (detoxifying), a "die off" or Herxheimer's reaction may occur. This die off response is generally experienced as nausea, flu-like symptoms or allergic attacks. This however usually only happens with the first use of a high dosage and normally passes quickly.

It is suggested that people on chemo-therapeutic medication consult with a practitioner when deciding to consume any anti-oxidant or vitamin supplements in large doses.

Olive leaf extracts may deactivate antibiotics and should not be taken while using antibiotics.

We suggest a small break of between 3 to 5 days between bottles when taken every day over extended periods.

Olive Leaf Extract Mandarin Contains ...

Pure Water Kosher Food Grade Vegetable Glycerine Organic Olive Leaf Extract
Olive Leaf 10x Concentrate Vitamin C (Ascorbic Acid) Vitamin E (d-alpha tocopherol from wheat germ)
Cold Pressed Mandarin Essential Oil Citrus Seed Extract

Olive Leaf Extract Nat Double Strength 500ml

What is it for and what does it do ?

Olive leaf extracts have been traditionally used as an aid to overcoming symptoms of colds and flu. Olive leaf extracts can also aid in better breathing and to improve the function of the lungs in problems like cystic fibrosis. Most people using olive leaf daily also find that they also experience an increase in general wellbeing and energy levels. Olive leaf extracts have been shown to improve non-specific immunity in humans, are highly anti-oxidant, aid human digestion and improve sugar levels.

1.8 grams leaf per ml

How do I use it ?

Shake well before use.

We suggest commencing with 3 to 5ml daily in the morning before food.

After a couple of days move to between 5 and 10 ml daily.

The maximum suggested dose is 15 ml per day.

Feedback from customers state that they generally notice improved energy levels and an increased sense of wellbeing within a week.



Does it have any distinctive features ?

This product is alcohol free and does not contain any added sugar.

This product is made using both warm and cold extracts of olive leaves.

This ensures that our olive leaf product contains the maximum achievable anti-oxidant and phyto-therapeutic activity.

Roseneath uses citrus seed extract as a natural preservative.

Is there a Roseneath alternative to this product ?

Roseneath Organics provides two different olive leaf products.

The Double Strength Natural Flavour version is the strongest product with an equivalent 1.8 gms of leaf per ml.

The Double Strength extract is more suitable for those individuals looking for a serious strength extract or those just looking for strong olive leaf with no added extras. The Mandarin Flavour Extract with added vitamin C and E contains an industry standard equivalent of 0.9 grams of leaf per ml. Roseneath Organics Mandarin Flavour Extract is generally suitable for daily use as a tonic by everyone.

What other brands can I compare this product to ?

There are a number of Olive Leaf products available commercially. Customers need to compare the equivalent amount of leaf per gram in Olive Leaf products to decide what suits them best. Our customers tell us they are more than satisfied with results when they are using the Roseneath product.

Why would I buy this Roseneath product over the other brands ?

The Roseneath Olive Leaf products have been made using two extractions from olive leaves. One is performed hot and the other is performed cold. These two extractions are then recombined to produce the final product. We are not aware of any other manufacturer that does this.

Are there any cautions I should be aware of when using this product ?

We are not aware of any cautions when taking olive leaf extracts. Some people may be allergic to citrus.

We would suggest that it is better to take a small dose over an extended period than it is to try and use mega-doses to overcome a suddenly contracted flu or virus. Either way the Roseneath extracts can be very effective.

Olive leaf extracts are non-toxic, but when killing too many pathogens too quickly (detoxifying), a "die off" or Herxheimer's reaction may occur. This die off response is generally experienced as nausea, flu-like symptoms or allergic attacks. This however usually only happens with the first use of a high dosage and normally passes quickly.

It is suggested that people on chemo-therapeutic medication consult with a practitioner when deciding to consume any anti-oxidant or vitamin supplements in large doses.

Olive leaf extracts may deactivate antibiotics and should not be taken while using antibiotics.

We suggest a small break of between 3 to 5 days between bottles when taken every day over extended periods.

Olive Leaf Extract Natural Double Strength Contains ...

Pure Water Kosher Food Grade Vegetable Glycerine Organic Olive Leaf Extract
Olive Leaf 10x Concentrate Citrus Seed Extract

Happy Tummy Tonic 200ml and 500ml

What is it for and what does it do ?

This is a liquid concentrate that should be added to water or juice. Happy Tummy Tonic has a bitter smokey mint flavour and most people use Happy Tummy Tonic to improve their digestion, to soothe stomach ulcers or to assist in the control of acid reflux. People with Crohns disease, colitis or irritable bowel may also find this product very useful.

The ingredients found in Roseneath Organics Happy Tummy Tonic have a long and effective traditional use in aiding digestion, supporting healthy liver function, aiding detoxification of the digestive tract, dealing with parasites, balancing bacterial and flora numbers whilst generally improving immuno-digestive health.

How do I use it ?

Shake well before use.

Happy Tummy Tonic is best if taken before breakfast.

Mix Happy Tummy Tonic with 50ml of fresh water or juice.

We suggest commencing with 1 to 2 ml /day.

After a couple of days move to between 2 and 5 ml /day

Suggested Maximum Adult Dosage is 10 ml /day

As a general digestive tonic 2ml / day is sufficient.

For gastric emergencies a mixed dose of 5ml would be more appropriate.

Happy Tummy can be combined with Blood Clear Tonic and both taken at the same time.



Does it have any distinctive features ?

Happy Tummy Tonic uses organic pineapple extract as a base for this product which provides essential enzymes to aid digestion through supplementing poor pancreatic function.

Is there a Roseneath alternative to this product ?

No. Currently, this is our only product for digestion issues

What other brands can I compare this product to ?

There are several natural digestive tonics available in the marketplace.

Swedish Bitters is one that has an excellent reputation.

Why would I buy this Roseneath product over the other brands ?

Happy Tummy Tonic contains many natural extracts that are found in other digestive products.

What separates this product from the others is the inclusion of bacterial foods into the mix. This means that Happy Tummy is not only a digestive tonic but also helps to increase viable bacterial populations in the digestive tract.

Roseneath Organics Happy Tummy Tonic is made here in South Australia.

Are there any cautions I should be aware of when using this product ?

It is important that in cases of gastric discomfort and poor bowel movements that the customer ensure that their problems are not the symptom of a bowel cancer or other serious health issue. Happy Tummy Tonic is not intended for the treatment of any cancer or connective tissue disorder.

It is suggested that people on chemo-therapeutic medication consult with a practitioner when deciding to consume any anti-oxidant or vitamin supplements in large doses.

Happy Tummy Tonic may deactivate antibiotics and should not be taken while using antibiotics.

We suggest a small break of between 3 to 5 days between bottles when taken every day over extended periods.

Happy Tummy Tonic Contains ...

Organic Pineapple Juice Water Raw Sugar GM-Free Rice Bran Oil Organic Calendula Flower Extract
Ethanol Apple Cider Vinegar Cold Pressed Sweet Almond Oil Manuka Honey Pale Boiled Linseed Oil
Citrus Seed Extract Vegetable Glycerine Organic German Chamomile Extract Organic Garlic Extract
Organic Flowering Sage Tops Organic Astragalus Root Extract Organic Roman Wormwood Extract
Organic St John's Wort Extract Cats Claw Extract Licorice Root Extract Schizandra Berry Extract
Shiitake Mushroom Extract Fennel Tops Extract Evening Primrose Oil Orris Root Arvensis Essential Oil
Slippery Elm Raw Lecithin Star Anise Essential Oil Benzoin Gum Extract Neem Oil
Dandelion Root Extract Turmeric Oleoresin Citrus Pectin Acacia Gum Guar Gum Xanthan Gum

The Key To Understanding Happy Tummy Tonic Ingredients ...

AM – Anti Microbial
DA – Digestive Aid
HA – Healing Agent

AP – Anti Parasitic
DT – Detoxifying Agent
IS – Immune Stimulant

BF – Bacterial Food
EP – Encourages Peristalsis
LS – Liver Supportive

Benzoin Gum and Citrus Seed Extracts _____ AM AP HA

Fresh Organic Flowering Sage Extract, Organic Roman Wormwood Extract
and Star Anise Essential Oil _____ AM DA AP

Fresh Organic German Chamomile Flowering Tops Extract _____ AM DA EP

Fresh Fennel Tops and Fresh Organic Pineapple Extract, Manuka Honey,
Apple Cider Vinegar and Arvensis Essential Oil _____ AM DA HA

Licorice Root Extract _____ AM HA IS

Shiitake Mushroom, Organic Astragalus Root and Fresh Organic Garlic Extracts _____ AM IS LS

Organic St John's Wort Tops Extract _____ AM IS HA

Turmeric Oleoresin and Neem Oil _____ AM IS AP

Orris Root and Slippery Elm _____ BF DA HA

Citrus Pectin, Acacia Gum, Guar Gum and Xanthan Gum _____ BF DT HA

Raw Lecithin _____ BF HA LS

Schizandra Berry Extract _____ DA IS LS

Organic Calendula Flower Extract, Cold Pressed Sweet Almond Oil,
Linseed Oil, Evening Primrose Oil and Cats Claw Extracts _____ IS HA LS

Dandelion Root Extract _____ BF HA LS

Blood Clear Tonic 200ml

What is it for and what does it do ?

Roseneath Blood Clear Tonic is a companion product to the Happy Tummy Tonic. Blood Clear contains herbal extracts that have been shown to vastly improve particulate carbon clearing in immuno-related blood tests. Substances shown to increase the rate of clearing of foreign objects from the blood are useful in the management of various undesirable blood and tissue borne entities. These undesirable entities could be fungal spores, yeasts, bacteria, protozoa, viruses and other parasites and/or opportunistic organisms sometimes found invading the human body. The basis for this product is taken from clinical results made publicly available by both university and pharmaceutical industry drug testing laboratories. Blood Clear incorporates the best tested natural ingredients that have been shown to vastly improve results from what is known as the 'Carbon Clearing Test'. This is a clinical laboratory test that measures the rate at which various administered substances stimulate and thus improve the immune systems ability to clear particulated carbon from the blood stream.



How do I use it ?

Shake the Blood Clear bottle well before each use
Mix with 50ml fresh water or juice. Best if taken roughly 10 minutes before meals.

We Suggest Commencing with 1 to 2 ml / day
If you need more effect from the product then increase to between 2 and 5 ml / day
Maximum Suggested Adult Dosage is 10 ml / day

For the treatment of serious systemic yeast and microbial problems, Happy Tummy Tonic may be combined with Blood Clear Tonic. In these situations it is suggested that 5ml of both products be mixed together in the same cup and that only one combined dose be taken daily. We would suggest that an immune system break of 2 or 3 days be taken after a 2 week period of daily consumption of a 10ml combined dose. This break is to prevent any undesirable over-stimulation of the immune system. Excessive over-stimulation may result in general fatigue and cold or flu like symptoms.

Does it have any distinctive features ?

All of the herbal ingredients have been selected for their ability to vastly improve particulate carbon clearing tests as carried out by research doctors working for medical research foundations.

Is there a Roseneath alternative to this product ?

No. Currently, this our only product for blood issues.

What other brands can I compare this product to ?

We are not aware of any other products in the same category as Roseneath Blood Clear Tonic. Perhaps the most similar products out there would be nutra-ceutical supplements for immuno-activation.

Why would I buy this Roseneath product over the other brands ?

Blood Clear Tonic is distinctively formulated and is made from quality organic herbal ingredients.

Are there any cautions I should be aware of when using this product ?

Roseneath suggests that it is not advisable to take Blood Clear Tonic during pregnancy or if planning a pregnancy. It is suggested that people on chemo-therapeutic medication consult with a practitioner when deciding to consume any anti-oxidant or vitamin supplements in large doses.
Blood Clear Tonic may deactivate antibiotics and should not be taken while using antibiotics.
We suggest a small break of between 3 to 5 days between bottles when taken every day over extended periods.

Blood Clear Tonic Contains ... Water Vegetable Glycerine (Kosher Food Grade) Sarsaparilla Root Extract GM-Free Rice Bran Oil Organic Calendula Flower Extract Organic St John's Wort Extract Lecithin Ethanol Apple Cider Vinegar

plus ... Herbal Extracts of ... Wild Fennel Tops Fresh Organic Garlic Bulbs Cats Claw Bark Pau D'Arco Bark Fresh Organic Ginger Root Whole Shiitake Mushrooms Fresh Organic Echinacea purpurea Tops Fresh German Chamomile Flowers Fresh Organic Sage Tops Organic Astragalus Root Organic Withania Root Organic Burdock Root Organic Dandelion Root and Echinacea angustifolia Root

plus ... Cold Pressed Sweet Almond Oil Cold Pressed Flax Seed Oil Organic Spirulina Algae Whole Cherry Extract Organic Rosemary Extract Vitamin C (Ascorbic Acid) Vitamin E (d-alpha tocopherol) Citrus Seed Extract Turmeric Essential Oil Wild Thyme Essential Oil Citrus Pectin Guar Gum Xanthan Gum Acacia Gum

Cats Claw Extract 500ml

What is it for and what does it do ?

Cats Claw (*Uncaria tomentosa*) is known in Spanish as 'Una de Gato' and has been used for hundreds of years as a powerful immune tonic.

The bark from the Cats Claw vine has been tested and trialed extensively since the 1970s in many countries including Germany, Italy, Austria, England, Hungary and Peru. Trials have shown that Cats Claw bark possesses outstanding medicinal and therapeutic qualities.

Cats Claw has immuno-stimulant, anti-inflammatory and cytostatic properties that help the body to control bad pre-cancerous cells. Relatively low amounts of Cats Claw are required in order to achieve anti-inflammatory and oncostatic effects.

Scientific studies have shown that Cats Claw extracts also support the immune system during radiotherapy and chemotherapy by removing toxic metabolites.

Cats Claw extracts have a significant anti-viral action and can help relieve symptoms of colds and flu.

Cats Claw extracts contain highly anti-oxidant proanthocyanidins and polyphenols that can be very effective in combating the effects of pollution, pesticides, sun damage, stress and illness.

Cats Claw extracts also display significant anti-histamine effects and can be useful in the control of allergic reactions.

Cats Claw has displayed contraceptive properties when used in high concentrations.

Other research has shown that Cats Claw even possesses anti-leukemic, anti-microbial, anti-rheumatic and broad spectrum anti-viral properties.



How do I use it ?

Shake well before use. Mix with 50ml fresh water or juice.

Best if taken roughly 10 minutes before meals.

We Suggest Commencing with 1 to 2 ml / day

If you need more effect from the product then increase to between 3 and 6 ml / day

Maximum Adult Dosage 10 ml / day

We would suggest that an immune system break of 2 or 3 days be taken after a 2 week period of daily consumption.

This break is to prevent any undesirable over-stimulation of the immune system. Excessive over-stimulation may result in general fatigue and cold or flu like symptoms.

Does it have any distinctive features ?

Roseneath Cats Claw Extract is made from herb grown sustainably in Peru and is made as a 1:1 volumetric full strength extract using certified organic apple cider vinegar.

Is there a Roseneath alternative to this product ?

There isn't any real direct Roseneath alternative to this product. For general colds and flu it is possible to substitute with Olive Leaf Extract. For inflammation and joint pain it is possible to apply the Pain Relief products externally.

What other brands can I compare this product to ?

There are not many Cats Claw extracts available in the market.

Why would I buy this Roseneath product over the other brands ?

None of the other commercially available Cats Claw Extracts that we are aware of are a full strength extract.

Are there any cautions I should be aware of when using this product ?

It is not advisable to take Cats Claw during pregnancy or if planning a pregnancy

Cats Claw Extract Contains ...

1:1 Volumetric Extract of Cats Claw Bark in Certified Organic Apple Cider Vinegar

Tonic Product Testimonials

Olive Leaf Extract

"I love your olive leaf extract." **Struzina, VIC**

"I am now about to start my third 500ml bottle of Olive Leaf Extract for use in combating colds and flus. I have given the extract to all members of the family as soon as the symptoms of a cold start (scratchy throat) and we have all managed to get over our colds very quickly and without really feeling ill enough to have to take time off work or school etc. It has also appeared to stop the after effects of colds from developing like the annoying dry cough which could previously linger on for up to six weeks. I firmly believe that the product has helped our family and I will continue to use it when the need arises." **Karin, Adelaide**

"Already into the Olive Leaf Extract. Thank you all at Roseneath Organics for being so helpful. Tastes lovely." **Mary, Adelaide**

"I bought some of your OLIVE LEAF and I love it – it tastes great and I think I may have staved off a sore throat and cold." **Tunya, Melbourne**

Happy Tummy Tonic

Blood Clear Tonic

Cats Claw Extract

Body Care Products



BODY PRODUCTS SELECTION CHART

Product	Body	Hands	Face	Around Eyes
Replace Regenerative Lotion		✓	✓	✓
Retinox Anti-Oxidant Lotion		✓	✓	✓
Skin Feast Body Lotion	✓	✓	✓	
Rosemary & Lavender Tissue Cream	✓	✓	✓	
Scar Serum Oil	✓	✓	✓	✓
Scar Serum Fruit	✓	✓	✓	NO !
CoQ10 Mist Spray	✓	✓	✓	✓
Soft Face Wash	✓	✓	✓	
Refresh Toner / Cleanser	✓	✓	✓	✓
ACE Paste	✓	✓	✓	NO !
Dream State Insomnia Spray	As Directed			

PRODUCT GUIDELINES	Face	Body	Hair	Rosacea	Acne & T-Zone	Spider Veins	Stretch Marks	Scaring Blemishes	Tone & Structure
Replace Deep Feed Lotion	X			X		X			
Retinox Eye Face Lotion	X		X						X
Skin Feast Moisturiser	X	X			X				
Rosemary and Lavender Tissue Firming Cream	X	X							X
Scar Serum Oil	X	X					X	X	
Scar Serum Fruit	X	X					X	X	
CoQ10 Mist Spray	X			X	X	X			X
Soft Face Wash	X				X				X
Refresh Toner Cleanser	X			X	X				X
ACE Paste	X	X			X				X
Dream State Insomnia Spray	Enhances Sleep and Relaxation								

Roseneath body care products are different from most facial and skin care products found in the market. They utilise natural para-magnetic minerals, derived from from basalt and granite to cleverly trigger skin structures. Once triggered, these structures deliver ingredients deep into the skin, where they can be most effective as nutritional building blocks.

Roseneath body care products have been designed to be application specific and yet are also multi-functional so that the consumer can tailor their choices to meet their needs with minimal products. All products are generally non-comedogenic and cosmetic friendly.

Roseneath products do not contain any synthetic ingredients or synthetic preservatives. They are not perfumed to conceal their delicate chocolate, myrrh, herb or nut aromas. They are made from organically grown and unrefined ingredients, wherever possible.



Replace Deep Feed Cream Gel 125ml

What is it for and what does it do ?

Replace Deep Feed Cream Gel is suitable for most skin types. Replace is different to most other moisturizers in that it contains herbal extracts, such as liquid CoQ10 from pine bark, that can assist in the repair of damaged capillaries. Replace contains plant derived anti-histamines that work to reduce inflammation and puffiness. Replace is also very high in plant sourced vitamins and anti-oxidants. Replace is generally appropriate for use on Rosacea and inflamed facial skin.

How do I use it ?

Replace can be used alone as a daily facial moisturiser or in combination with Refresh Toner Cleanser in the evenings. Replace can be applied once or twice daily. It is recommended that Replace be used sparingly and that it be thoroughly massaged into the skin.

We find that using the Rosemary and Lavender Cream as a night time deep feed cream and then the Replace during the day time provides an excellent combination of feeding and nurturing for most skin types. Some people use the Rosemary and Lavender Cream to firm up the deeper tissue structures of the face and then move to using Replace when they have noticed an acceptable level of improvement from the Rosemary and Lavender product.

Does it have any distinctive features ?

Replace contains high levels of Quercetin and Coleus Forskolii plant extracts. Both of these plant extracts have been shown to markedly reduce the production of histamine. A reduction in histamine means that Replace will work to reduce inflammation and redness in the skin. Replace has very minimal residual aroma when applied to the skin. Replace has a slightly heavier skin feel than Retinox but is still light and non-greasy. Replace is generally compatible underneath most cosmetics and other facial products.

Is there a Roseneath alternative to this product ?

Roseneath makes several moisturizing products that would be suitable alternatives. Calendula Lotion can provide a suitable alternative, but Calendula Lotion does not contain the same levels of extra anti-oxidants or anti-inflammatory herbs that are found in Replace. Retinox eye and face lotion can also be used as a general facial moisturiser. The Retinox product is more aimed at tightening and toning facial skin. Retinox does not contain the anti-inflammatory herbal extracts such as Quercetin, Coleus, chickweed and nettle which are included in the Replace product. Rosemary and Lavender Cream can be used when a heavier feel is required but as per the other two suggestions above, this cream does not contain the anti-inflammatory ingredients included in the Replace lotion.

What other brands can I compare this product to ?

There are many facial care products in the market place. Replace uses paramagnetic minerals to deliver active ingredients deeper into the skin where they can be utilised rather than having them sit on top and be washed off with the next shower, as is too often the case with many moisturisers. We are not aware of other products that utilise this innovative delivery technique.

Why would I buy this Roseneath product over the other brands ?

This is an all natural product that is far superior to most others found in the market place.

Are there any cautions I should be aware of when using this product ?

We are not aware of any precautions when using this product. When evaluating Replace as a moisturiser the usual common sense decisions apply with respect to allergies and sensitivities to certain natural ingredients or nuts. We would suggest a skin patch test if there is any potential for allergic reaction.

Replace Deep Feed Cream Gel Contains...

Rose Distillate Water Para-magnetic Mineral Extract GM Free GM-Free Rice Bran Oil Organic Calendula Extract Vegetable Glycerine Organic Lavender Extract Witch Hazel & German Chamomile Distillates Organic Cocoa Butter Organic Shea Butter Organic Palm Oil Lecithin Raw Bees Wax Ethanol Almond Oil Extract Citrus Seed Extract Pinus Pinaster Extract (Natural CoQ10) Guar Gum Myrrh Gum & Gum Benzoin Extracts Organic Nettle, Organic Chickweed, Organic St Johns Wort, Organic Self Heal & Organic Burdock Root Extracts Shiitake Mushroom Extract Vitamin C (Ascorbic Acid) Wheatgerm Oil (Natural Vitamin E) Agar Agar Quercetin Vitamin A (Retinol Palmitate) L-Lysine Lactic Acid Coleus Forskolli Extract Olive Leaf Extract Grape Seed Extract Essential Oils of Peru Balsam, Lavender, Lime, Vetiver and Rose Geranium Arrowroot



Retinox Eye Face Moisturiser 125ml

What is it for and what does it do ?

A light and non-greasy lotion that improves both skin texture and pore size. Retinox feels cool and refreshing on the skin and has been formulated for use on the face and around the eyes. Retinox works to smooth, tone, tighten and firm facial skin. Retinox contains high levels of plant nutrients such as olive leaf extract, GM-Free Rice Bran, alpha-lipoic acid, allantoin and L-Lysine that fight free radical damage and increase the body's ability to fight bacteria on the skin. It has been noted that Retinox can also be used very successfully to remove mascara and oil based eye makeup.

How do I use it ?

Retinox can be used alone as a daily facial moisturiser or in combination with Refresh Toner Cleanser in the evenings. Retinox can be applied once or twice daily. We find that using the Rosemary and Lavender Cream as a night time deep feed cream, and then the Retinox during the day time provides an excellent combination of feeding and nurturing for most skin types. Some people use the Rosemary and Lavender Cream to firm up the deeper tissue structures of the face and then move to using Retinox when they have noticed an acceptable level of improvement from the Rosemary and Lavender product.

Does it have any distinctive features ?

Retinox has a pleasant nutty balsamic aroma that dissipates fairly rapidly and is generally compatible underneath cosmetics and other facial products. We have been told by customers using Retinox that it helps to improve makeup adhesion which results in makeup lasting longer.

Is there a Roseneath alternative to this product ?

Roseneath makes several moisturizing products that would be suitable alternatives. Calendula Lotion can provide a suitable alternative but Calendula Lotion does not contain the same levels of extra anti-oxidants and therapeutic plant extracts that are found in Retinox. Replace or Rosemary and Lavender Cream can be used when a deep feed moisturiser is required.

What other brands can I compare this product to ?

There are many facial care products in the market place. Retinox uses paramagnetic minerals to deliver active ingredients deeper into the skin where they can be utilised rather than having them sit on top and be washed off with the next shower, as is too often the case with many moisturisers.

Why would I buy this Roseneath product over the other brands ?

This is an all natural product that gives a result far superior to many other moisturisers found in the market place. Retinox is affordably priced but provides a high price results

Are there any cautions I should be aware of when using this product ?

We are not aware of any precautions with this product. When evaluating Retinox as a moisturiser the usual common sense decisions apply with respect to allergies and sensitivities to certain natural ingredients or nuts. We always recommend patch testing on skin where allergic reactions are a possibility.

Retinox Eye and Face Moisturiser Contains ...

Rose Distillate Water Para-magnetic Mineral Extract Organic Shea Butter GM Free Ricebran Oil Organic Calendula Extract Cold Pressed Apricot Oil Organic Cocoa Butter Vegetable Glycerine (Kosher Vegetable) Organic Lavender & Organic Rosemary Extracts Almond Oil Extract Coconut Oil Extract Citrus Seed Extract Lecithin Gum Benzoin Extract Guar Gum Ethanol Lavender Essential Oil Vitamin A (Retinol Palmitate) Lime Essential Oil Lactic Acid Organic Arrowroot Powder Sodium Hyaluronate Vitamin C (Ascorbic Acid) Vetiver Grass Essential Oil Olive Leaf Extract Grape Seed Extract L-Lysine Alpha Lipoic Acid Rose Geranium Essential Oil Agar Agar Allantoin Zinc Citrate Calcium Citrate



Skin Feast Moisturiser 250ml

What is it for and what does it do ?

Skin Feast is a lighter moisturiser suitable for use anywhere on the body.

Skin Feast is packed full of anti-oxidants and ingredients to encourage the growth of healthier and more robust skin tissue.

This product contains paramagnetic minerals that deliver ingredients deep into the skin, and calendula extract to promote glowing skin and reduce the appearance of scarring.

How do I use it ?

Apply a small amount of Skin Feast to clean fingers and rub into the skin.

It is suggested that Skin Feast be applied following a shower or bath when the skin has been adequately cleansed. For use on the face it is suggested that the skin be cleansed with Soft Face Wash and then the Skin Feast is applied afterwards.

Does it have any distinctive features ?

Skin Feast is made using fresh organic aloe vera gel along with three classic flower distillates – Rose, Witch Hazel and Chamomile. Most aloe gel in the market place is not all aloe and contains adulterants. Roseneath grows its own organic aloe for use in the products. We do not use a reconstituted powdered aloe concentrate.

Is there a Roseneath alternative to this product ?

There are a number of Roseneath alternatives to this product.

As a general rule people who use the Skin Feast are after a lighter style product that doesn't feel heavy on the skin. As an alternative to Skin Feast there is Calendula Lotion, Retinox, Replace or Calendula Oil.

When using an alternative to the Skin Feast for the control of acne and over-active sebum we would suggest that the customer select a lighter moisturiser such as the Calendula Lotion. It is wise to avoid the use of heavier creams when dealing with skin oil imbalances.

What other brands can I compare this product to ?

There are many varied moisturisers on the market but few contain the same number and concentration of active ingredients that are found in Skin Feast. Few of the medicated products sold specifically to deal with acne are natural.

Why would I buy this Roseneath product over the other brands ?

It is an all natural product that provides excellent value for money.

Are there any cautions I should be aware of when using this product ?

Some people simply do not like the smell of rock rose (labdanum), benzoin and myrrh. If there is a suspected allergic issue with some of the ingredients found in Skin Feast then we would recommend a skin patch test.

Skin Feast Contains ...

German Chamomile Floral Water Water Paramagnetic Mineral Extract Organic Aloe Vera Gel
GM-Free Rice Bran Oil Organic Calendula Flower Extract Organic Shea Butter Organic Palm Oil Ethanol
Cold Pressed Sweet Almond Oil Organic Rosemary Extract Vegetable Glycerine
Rose & Witch Hazel Distillates Organic Coconut Oil Organic Cocoa Butter Cold Pressed Apricot Oil
Evening Primrose & Macadamia Oils Xanthan Gum Raw Bees Wax Wheatgerm Oil Lecithin
Almond Oil Soluboliser Myrrh & Benzoin Gum Extracts Vitamin C (Ascorbic Acid)
Vitamin A (Retinol Palmitate) Essential oils of Mandarin, Lavender, Rosemary & Lime Lactic Acid
Olive Leaf Extract Guar Gum Grape Seed & Citrus Seed Extracts I-Lysine Agar Agar
Essential oil of Vetiver Grass Arrowroot Labdanum Extracts



Rosemary and Lavender Cream 90gm

What is it for and what does it do ?

Roseneath Rosemary and Lavender Cream is a traditional French style cream butter. It is very rich and nutritious with high levels of fatty acids and flower distillates. It contains high levels of organic anti-oxidant rosemary extract and regenerative lavender that aids the body's natural collagen and elastin synthesis. Rosemary and Lavender combined with vitamins, good quality fatty acids and sodium hyaluronate helps promote vibrant healthy soft supple skin. This cream moisturises deeply, hydrates and improves skin texture.



Rosemary and Lavender Cream is suitable for use on the hands, body or face.

This cream is very useful in cases of dermatitis or contact allergies as often seen in the cleaning industry and where people are often washing their hands and / or in contact with harsh chemicals.

Auto-mechanics and gardeners also find the cream quite useful to maintain their skin condition.

Rosemary and Lavender Cream is also very helpful in trying to improve the elasticity and structure of mature facial skin that is showing visible signs of ageing.

How do I use it ?

This cream is suitable for use on all skin types. It may feel heavy on oily skin. Rosemary and Lavender moisturizing cream is light and readily absorbed on moist skin. A little bit goes a long way. For a lighter application it is suggested that the cream be applied to damp skin. A light mist with a rosewater spritzer is ideal for this purpose.

Rosemary and Lavender Cream is often used at night time and combined with an application of the Retinax or Replace products by day. It is suggested that a quality calcium citrate supplement be taken by mature women who don't consume many calcium rich foods so as to ensure that their cheekbone structure doesn't deteriorate with age, hormonal changes and subsequent calcium loss.

Does it have any distinctive features ?

A nutritious base of cocoa butter, shea butter, lecithin and palm oil provides a broad spectrum of fatty acids essential to healthy, soft skin. Being an oil based cream, this product moisturises deeply and does not 'wash out' with soaps and water as readily as most commercial water based creams. This Cream also contains myrrh extract, vitamin C and Grape Seed extract for better skin health.

Is there a Roseneath alternative to this product ?

The only real alternative to this product is the Roseneath Calendula Cream. Calendula rich products are generally more suitable for surface tissue, and will not help to firm and improve the condition of deeper tissue like the Rosemary and Lavender Cream does.

What other brands can I compare this product to ?

There are quite a few lavender and quite a few rosemary cream products in the market, but for some reason not many manufacturers seem to combine both into one product. We have found that the combination of these two major herbal extracts provides a truly superior result in terms of tissue elasticity and fullness.

Why would I buy this Roseneath product over the other brands ?

This is an all natural product that gives a result far superior to that reflected by its price tag.

Are there any cautions I should be aware of when using this product ?

We are not aware of any precautions with this product. When evaluating Rosemary and Lavender Cream for use the usual common sense decisions apply with respect to allergies and sensitivities to certain natural ingredients or nuts.

Rosemary and Lavender Cream Contains ...

GM Free Ricebran Oil Rose Distillate Organic Cocoa Butter German Chamomile & Witch Hazel Distillates
Organic Shea Butter Vegetable Glycerine Organic Rosemary Extract Raw Bees Wax Ethanol
Organic Columbian Palm Oil Organic Coconut Oil Lecithin Wheatgerm Oil Coconut & Almond Oil Extracts
Organic Arrowroot Extract Gum Benzoin Extract Myrrh Gum Extract Xanthan Gum
Essential Oils of Lavender & Rosemary Vitamin C (Ascorbic Acid) Citrus Seed Extract Borax
Sodium Hyaluronate Grape Seed Extract Agar Agar

Scar Serum Oil 50ml

What is it for and what does it do ?

Scar Serum Oil is formulated to help elasticize damaged scar tissue and to encourage the formation of relatively scar free tissue healing. Scar Serum Oil contains a wide range of ingredients, which have been traditionally used for wound healing and to minimize scarring during normal tissue repair. Scar Serum Oil can be applied to a relatively fresh wound or to injuries that are not so recent. Scar Serum Oil can be applied to stretch marks with great success. Over several months of daily application stretch marks will become lighter in colour, and will appear to fade. For serious scarring, we would suggest combining this product with Roseneath Organics Scar Serum Fruit.

How do I use it ?

Pump a small amount of Scar Serum Oil onto the scar or injured area. The Scar Serum Oil can be applied once or twice daily. In the case of stretch marks or existing scarring the Scar Oil can be rubbed in, whereas, in the case of a relatively recent injury the Scar Oil can be allowed to soak in.

Results obtained from the Roseneath Scar Serum Oil can be vastly improved by complementing the use of the Scar Serum Oil with Scar Serum Fruit. This is important when trying to deal with old or serious scarring where heavy skin needs to be removed. This is apparent in cases of burns, general wound scarring, heavy discoloured stretch marks or bad acne scarring. In general, the Scar Fruit enzyme exfoliant is used at night time to break down the proteins on the surface of the skin, and the Oil is applied the following morning after bathing.

Does it have any distinctive features ?

Roseneath Scar Serum Oil contains 20% Organic Rosehip oil and 20% Organic Calendula along with an array of other cold pressed oils, lecithin and essential plant oils. This offers more effective potential tissue regeneration than the standard rosehip oil approach. This is evident from the testimonials received by us at Roseneath from people who have switched to this product after using plain rose hip oil products.

Is there a Roseneath alternative to this product ?

For mild scarring problems the Roseneath Calendula Oil could be substituted for Scar Serum Oil. We have found however that the Scar Serum Oil will do a far superior job than calendula can do on its own.

What other brands can I compare this product to ?

There are several scar reduction products on the market. Some are oil based and some are water based.

Why would I buy this Roseneath product over the other brands ?

Roseneath offers a two part solution for removing heavy skin and for minimizing and effectively removing scarring. The alternate use of the Scar Serum Oil and Scar Serum Fruit products provide a total repair solution.

Are there any cautions I should be aware of when using this product ?

We are not aware of any cautions to be followed when using Scar Serum Oil. When evaluating Scar Serum Oil, the usual common sense decisions apply with respect to allergies and sensitivities to certain natural ingredients or nuts. It is always sensible to patch test if unsure about allergic reactions.

Scar Serum Oil Formula Contains ...

Organic Rosehip Oil GM-Free Rice Bran Oil Organic Calendula Extract Wheatgerm Oil Avocado Oil
Evening Primrose Oil Hemp Seed Oil Hazelnut Oil Organic Jojoba Oil Castor Oil Apricot Kernel Oil
Liquid Lecithin Vitamin A (Retinol Palmitate) Coconut Oil Extract Almond Oil Extract
Essential oils of Lavender Helychrysum Cabreuva Petitgrain Hyssop Frankincense Coriander
Lime Lemon Grapefruit Palmarosa Tangerine Rosemary and Rosewood



Scar Serum Fruit 50ml

What is it for and what does it do ?

Scar Serum Fruit is a fresh fruit based enzyme exfoliant for removing unwanted skin or scar tissue. Active fruit enzymes contained within the serum will slowly and gently break down skin protein. This Scar Serum Fruit formula can be used for the controlled removal of hard surface protein, prior to application of an elasticizing oil such as Scar Serum Oil. This Fruit formula can also be used as a no-scrub exfoliant to gently remove old acne scarring or stretch marks.

How do I use it ?

The Scar Serum Fruit should be applied only once daily.

Pump a small amount of Scar Serum Fruit onto your finger and apply to the scar or damaged area. We suggest applying the Fruit serum quite generously and allowing it to take effect. Do not rub the fruit serum into the skin. Spread the serum over the skin and allow it to sit on the skin for at least 20 minutes.

The best routine is to use the Scar Serum Fruit and to immediately apply the Scar Serum Oil after removal of the fruit serum.

In the case that the Scar Serum Fruit is used as a general exfoliant, it is suggested that the serum be applied twice in a week. A high quality moisturizer, should be applied following the removal of the Fruit serum.



Does it have any distinctive features ?

Roseneath Scar Serum Fruit is made from cold extractions of fresh fruit. Cold extraction ensures that the active protein digesting and skin conditioning enzymes are extracted whole, and complete, for their inclusion into this Fruit serum. Cold extraction also allows many of the vitamins and natural anti-oxidant components in the fruit to be extracted with minimal damage. Cold extraction only improves the effect and quality of this product.

Is there a Roseneath alternative to this product ?

No. This is the only Roseneath product of its kind.

What other brands can I compare this product to ?

There are several scar reduction products on the market. Some are oil based and some are water based. Not many of them are water and fruit glycerite based as is the Roseneath serum.

Why would I buy this Roseneath product over the other brands ?

Most products for dealing with scar tissue do not address the issue of *keying* the skin to allow for better results. Roseneath offers a two part solution for removing heavy skin and for minimizing and effectively removing scarring. The alternate use of the Scar Serum Fruit and Scar Serum Oil products provide a total repair solution.

Are there any cautions I should be aware of when using this product ?

We would suggest that people with an allergy to fruit, vitamin C or salicylates avoid the use of this product.

When in doubt about allergies patch testing the skin is always recommended.

We also suggest that people using this as a general exfoliant use it in conjunction with a quality moisturiser so that the newly exposed tissue is nurtured and protected during the day time. After all, Scar Serum Fruit Enzyme Exfoliant does remove surface skin. The Scar Serum Oil or Calendula products will provide more than adequate moisturizing.

Scar Serum Fruit Contains ...

Water Vegetable Glycerine (Kosher Food Grade) Fresh Organic Pineapple Extract
Fresh Organic Kiwi Fruit Extract Fresh Organic Pawpaw Extract Fresh Apple Extract
Fresh Organic Strawberry Extract Fresh Organic Mango Extract Organic Calendula Extract
Paramagnetic Mineral Extract Ethanol Coconut and Almond Oil Extracts Lecithin
Vitamin A (Retinol Palmitate) Guar Gum Xanthan Gum Salicylic Acid
Vitamin C (Ascorbic Acid) Lactic Acid Citrus Seed Extract Papain

CoQ10 Mist Spray 50ml

37% Natural CoQ10

What is it for and what does it do ?

CoQ10 Mist Spray is a light and refreshing facial spray that has been formulated to help with facial redness and rosacea. CoQ10 Mist Spray will also improve micro-circulation and spider veins in the cheeks. CoQ10 is highly anti-oxidant, much more than vitamin E or vitamin C. CoQ10 inhibits the damaging effects of tissue enzymes such as hyaluronidase, elastase and collagenase. These enzymes that are inhibited by CoQ10 are normally responsible for the natural breakdown of elastic skin structures.

The CoQ10 found within this spray is extracted from mature pine bark.

This product also contains significant amounts of german chamomile essential oil which is noted for its' calming action on the skin.

How do I use it ?

Close the eyes and apply a light mist over the face.

Wait a minute prior to the application of your facial moisturiser.

As this product can result in significant immediate tightening of the skin it is suggested that a lighter moisturizer be applied following the application of the CoQ10 mist.

The use of Retinax, Replace or Calendula lotion would be a suitable moisturizer for this purpose.

Does it have any distinctive features ?

The paramagnetic minerals and fresh organic aloe extract in this spray mist encourages good skin penetration. This penetration of the skin helps to deliver natural CoQ10, organic calendula extract, soothing fresh organic cucumber juice, nurturing rose water and de-toxifying German chamomile essential oil deep into skin.

Is there a Roseneath alternative to this product ?

No. Currently, this is our only CoQ10 mist product.

What other brands can I compare this product to ?

There are other CoQ10 sprays on the market but we are not aware of any with such high active levels of natural CoQ10. Our product also contains a range of synergistic vitamins and floral water extracts that aid in conditioning and toning the skin.

Why would I buy this Roseneath product over the other brands ?

This is an all natural product that gives a result far superior to that reflected by its price tag.

Are there any cautions I should be aware of when using this product ?

Some individuals may be allergic to salicylates in calendula extracts or to aloe vera. When evaluating CoQ10 Mist Spray for the skin it is common sense to take into account any allergies and sensitivities to certain natural ingredients. We would recommend that if there is concern of allergic reaction that a skin patch test be conducted.



CoQ10 Mist Spray Contains...

Water Pinus Pinaster Extract (Natural CoQ10) Fresh Organic Aloe Vera Gel Paramagnetic Mineral Extract
Organic Cucumber Juice Ethanol Organic Calendula Flower Extract Rose Flower Distillate
Almond Oil and Coconut Oil Extracts Citrus Seed Extract German Chamomile Essential Oil

Soft Face Wash 250ml

What is it for and what does it do ?

This is a basic soap made from coconut and palm oils.

Soft Face Wash contains natural astringents and anti-bacterial ingredients and can be very helpful in the management of facial oil.

Soft Face Wash contains high levels of myrrh gum extract. Myrrh was used extensively in ancient Egypt for skin care and has been used to balance skin oil production for at least 5000 years. Myrrh is very useful for correcting a 't-zone' problem, and helping to reduce and control acne.

Soft Face Wash contains raw Silk and Kaolin clay for gentle exfoliation and pore cleansing. Using Soft Face Wash encourages cleaner, softer and healthier skin.

Soft Face Wash will remove general makeup, but will sting if it gets into the eyes.

Soft Face Wash will not remove heavier oil based makeup.

How do I use it ?

Wet the hands and face prior to applying the wash. Apply a small amount of Soft Face Wash to the palm and gently work over a damp face. Keep Soft Face Wash out of the eyes, as the myrrh and essential oils will sting. Once the face has been cleansed, then wash off using clean water. Roseneath would suggest the use of a lighter companion moisturizer, such as Skin Feast, Retinox or Calendula lotion, when using Soft Face Wash.

Does it have any distinctive features ?

Soft Face Wash is a 100% natural soap.

This wash contains apple cider vinegar to help balance the pH of the skin.

Soft Face Wash contains extract of myrrh gum to control the production of sebum and to reduce inflammation from bacterial or fungal infection. Soft Face Wash contains Lemon (Anti microbial and reduces blemishes),

Orange (encourages new connective tissue and Steam Distilled Lime (degreases and reduces blemishes).

Soft Face Wash does not tend to strip the natural skin of oils like many other products.

Is there a Roseneath alternative to this product ?

For somebody using the Soft Face Wash as a cleanser, the Calendula Foaming Wash would be an appropriate substitution. The Calendula Foaming Wash is more drying on the skin, than the Soft Face Wash and should be followed up with an appropriate moisturiser. For someone using the Soft Face Wash for the control of acne and associated bacterial infections, there is no Roseneath alternative. Roseneath also offers cucumber juice based Refresh as a toner and cleanser. Refresh is a gentler product.

What other brands can I compare this product to ?

There are many washes on the market, but few of them are made from completely natural and traditional ingredients.

Why would I buy this Roseneath product over the other brands ?

Soft Face Wash is very affordable. Soft Face Wash is gentle on the skin and contains no synthetic foaming agents or surfactants. Soft Face Wash leaves your skin feeling clean, beautiful and soft. Soft Face Wash is made using palm oil that is grown sustainably and organically in Columbia. Roseneath sources palm oil from Colombia and we do not use palm oil from Orangutang sensitive forests.

Are there any cautions I should be aware of when using this product ?

Some people have lower levels of skin sebum. These people sometimes find that when they start using Soft Face Wash they develop some pimples. This is a result of the balancing action of Myrrh on the skin. Myrrh will act to reduce any over production of sebum and will encourage more production if the oil gland has been under active.

When this occurs it is suggested to continue using the Soft Face Wash as the skin will start to normalize over a couple of weeks and the pimples will stop. Most people find that the benefits to the skin from using Soft Face Wash usually outweigh the inconvenience of pimples over a couple of weeks when they first start using the product.

Soft Face Wash Contains ...

Water Saponified Coconut Oil Saponified Palm Oil Organic Apple Cider Vinegar
Kosher Food Grade Vegetable Glycerine Pink Active Clay Myrrh Extract Gum Benzoin Tincture
Cold Pressed Orange Essential Oil Cold Pressed Lemon Essential Oil Steam Distilled Lime Essential Oil
Almond Oil Soluboliser Orange Oil Extract Pure Silk Lactic Acid Citrus Seed Extract



Refresh Toner Cleanser 250ml

What is it for and what does it do ?

Refresh Toner Cleanser is formulated for the removal of light makeup and daily grime from the face prior to the fresh application of a night cream or moisturiser.

How do I use it ?

Apply Refresh to the hands or a pad and wipe over the face.

Work Refresh around on the skin for a minute to actively cleanse and tone.

Once applied any residual can be wiped off with a clean pad or washed off.

Refresh has excellent moisturizing and toning properties but can always be followed with the application of a quality face product.

Does it have any distinctive features ?

Refresh combines a Toner and Cleanser into one product

Refresh contains organic cucumber extract to aid with puffiness and congestion.

Refresh also contains vitamins, minerals and fatty acids to nourish the skin.

Refresh does not contain any added alcohol or synthetic surfactants.

Is there a Roseneath alternative to this product ?

The Soft Face Wash could be used as an alternative to this product if appropriate.

Soft Face Wash will have to be removed with water whereas Refresh Toner Cleanser can be simply wiped off. Roseneath also makes a Calendula Foaming Wash, which is suitable for the face (see Calendula section).

What other brands can I compare this product to ?

There are many brands of toners and cleansers on the market.

Refresh is both a toner and a cleanser in the one product.

Why would I buy this Roseneath product over the other brands ?

Refresh is alcohol free and is basically a high quality skin lotion that cleans, feeds and tones the skin.

Are there any cautions I should be aware of when using this product ?

We are not aware of any precautions with this product. When evaluating Refresh Toner Cleanser, the usual common sense decisions apply with respect to allergies and sensitivities to certain natural ingredients or nuts. It is always sensible to patch test the skin if there is concern over potential allergic reaction.

Refresh Toner Cleanser Contains ...

Witch Hazel Distillate Rose Flower Distillate Chamomile Flower Distillate Water
Para-magnetic Mineral Extract Organic Lavender Extract Kosher Vegetable Glycerine
Organic Cucumber Juice Organic Shea Butter Cold Pressed Apricot Oil Colloidal Silver
Organic Wheatgerm Oil Cold Pressed Hemp Oil Lecithin Citrus Seed Extract Gum Benzoin Tincture
Xanthan Gum Almond Oil Soluboliser Guar Gum Vitamin C (Ascorbic Acid) Lime Essential Oil
Organic Arrowroot Extract Vitamin A (Retinol Palmitate) Lavender and Rose Geranium Essential Oils
Lactic Acid



ACE Paste 150gm

What is it for and what does it do ?

ACE Paste is a gentle exfoliating scrub and drawing paste that is an aid to general facial care and acne control.

ACE Paste contains anti-oxidants, vitamins and minerals to aid skin health.

ACE Paste balances sebum production in the skin and encourages healthier new tissue. It contains Licorice to whiten and Peru Balsam to reduce puffiness.



How do I use it ?

To use just apply some ACE paste to damp skin and spread as required.

Should you require a gentle exfoliation then gently rub the paste around on

the skin during application. More rubbing equals more exfoliation. As the paste dries on the skin it will draw impurities.

The amount of draw will depend on the thickness of paste applied. ACE Paste dries to a fairly solid crust but is easily removed with plain water or wipes. Most people will find that ACE paste does not dry the skin but instead leaves it feeling soft and hydrated. For people with generally dry skin then a general light moisturizer could be used following removal of the ACE paste.

Does it have any distinctive features ?

ACE Paste is water based and can be easily removed, once dry, using clean water.

ACE Paste contains soft and gentle exfoliants such as powdered Slippery Elm bark and Orris root.

The active clays in ACE Paste are known for their ability to draw oil and deeply cleanse the skin.

ACE Paste contains skin lightening and anti-bacterial healing ingredients, along with natural CoQ10 plus vitamins A, C and E to aid in skin repair. Some customers have told us that they have not needed to wear foundation for days after using the Ace paste due to clearer and a more 'even' looking skin tone.

Is there a Roseneath alternative to this product ?

For general exfoliation the customer could use the Roseneath Scar Serum Fruit to gently break down and remove dead and/or dying surface skin.

What other brands can I compare this product to ?

There are many clay and silica scrubs on the market.

Why would I buy this Roseneath product over the other brands ?

ACE Paste is totally natural and is free from synthetic preservatives and chemicals.

Are there any cautions I should be aware of when using this product ?

It is wise to use ACE Paste with caution around the eyes, as this can result in bruising on delicate skin.

The bruising is a direct result of the drawing power of ACE Paste.

ACE Paste Active Blemish Clay Contains ... Kaolin Clay Pure Water Paramagnetic Mineral Extract
Pinus Pinaster Extract (Natural CoQ10) Fresh Organic Aloe Vera Gel Pink Active Clay Bentonite
Slippery Elm Bark Orris Root Ethanol Licorice Root Extract Citrus Seed Extract Xanthan Gum
Organic Tea Tree Essential Oil Lavender Essential Oil Vitamin C (Ascorbic Acid) Gum Benzoin
Peru Balsam Lactic Acid Vitamin A (Retinol Palmitate) Vitamin E (d-alpha Tocopherol)

Dream State Insomnia Spray 50ml

What is it for and what does it do ?

Dream State Insomnia Spray is an essential oil blend that has been formulated using research completed by independent members of the European Sleep Research Society.

They have verified that inhaling the aromas from certain plants, such as those found in Dream State, can greatly encourage a deeper, more refreshing, sleeping experience. These clinical findings were presented by the Japanese Institute of Mental Health and the Kao Corporation at the 16th Congress of the European Sleep Research Society (Reykjavik June 3 – 7, 2002).

Sleep trials have shown that the pleasant fragrance of certain essential oils actually inhibit excitement of the sympathetic nervous system and makes the para-sympathetic system more dominant. This means that, inhaled prior to sleep, these natural plant oils decrease the time it takes to fall asleep as well as the amount of waking during sleep *therefore* increasing the sleep quality.

How do I use it ?

We suggest using Dream State as an air spray or by applying a light spray to both ends of your pillow so you can inhale the fragrance as you sleep.

Do not over apply Dream State, as too much fragrance can have the undesirable effect of making it harder to fall sleep.

Does it have any distinctive features ?

Dream State spray, with its pleasant aroma and proven ingredients, can provide a very comfortable sleep inducing environment and also encourage a deeper and more restful sleep with less sleep disturbance.

Dream State is especially helpful for people whose sleep patterns are disturbed by shift work.

The ingredients in Dream State have been specifically chosen to help eliminate broken sleep problems.

Is there a Roseneath alternative to this product ?

We have been told by customers that the Dream State Spray appears to be more effective for those suffering from broken sleep as a result of irregular sleep patterns. It would appear that shift workers or people with erratic sleep patterns would benefit most from using Dream State. For general sleeping problems due to anxiety or stress it would perhaps be more appropriate to use the Roseneath Melissa Oil. Some people combine the Dream State Spray with an application of Melissa Oil and find that the combination works extremely well.

What other brands can I compare this product to ?

The other products that utilise this research are mostly available in Japan and are not targeted at Western consumers. They are available over the internet provided you can speak Japanese!

Why would I buy this Roseneath product over the other brands ?

Dream State Spray is the only product that we are aware of in Australia that uses the research presented at Reykjavik.

Are there any cautions I should be aware of when using this product ?

Some asthmatics may find it uncomfortable to inhale Dream State Aroma. This seems to be an individual thing as we have asthmatic clients who use the spray and claim it helps to improve their breathing. Due to the uncertainty of Dream State with asthmatics we would not recommend this product for use by asthmatics. Do not spray Dream State directly onto valuable linen as the essential oils may leave a stain. Do not overdose on Dream State as this can make some people groggy in the morning.

Do not spray Dream State directly onto the face of the pillow where your skin is in constant contact. This may result in sensitivity reactions and may cause a rash. This will go away fairly rapidly if it occurs.

Dream State Insomnia Spray Contains ...

Ethanol Sweet Orange Essential Oil Himalayan Cedarwood Essential Oil Cedrol Crystals
Frankincense Essential Oil Patchouli Essential Oil Ylang Ylang Complete Essential Oil
Lavender Essential Oil Australian Sandalwood Essential Oil Rose Geranium Essential Oil



Body Care Product Testimonials

Retinox Eye and Face Moisturiser

"Retinox is the best moisturiser I have ever used. It was recommended to me by the sales lady in our local health food store and it has given me wonderful results. My skin looks so much healthier. I also like being able to use the one lotion, morning and night with the added advantage of being able apply it around the eyes. (3 in one really)" **Helen, S.A.**

"We have been stocking your Retinox product in our health shop/ naturopath clinic for around 6 months now and have numerous clients that love it" **Kathy J, QLD**

"This product has a sweet aroma which dissipates fairly quickly. The texture is fairly fine and leaves the skin feeling hydrated, smooth and silky. I find that the skin glows but Retinox does not leave a ruddy complexion. Only a small amount of the product is needed." **Olivera W, Adelaide**

"...the Roseneath Organics eye cream is light, refreshing and feels lovely around the eyes. In addition to helping my tired eyes and making me feel more awake, the cream smells great. It works well under make-up and does not make skin look oily" **Katherine R. Aldgate SA**

Replace Deep Feed Cream Gel

"I bought the "Replace" a year ago and it is THE BEST MOISTURISER EVER USED AND VERY ECONOMICAL" **H.Anderson – Adelaide SA**

Refresh Toner Cleanser

"thank you; have used it before and love it" email

"...It was good for taking off my lipstick. My Lips stayed moist. It goes on smoothly. Has a nice soft feeling ... My skin felt moist in fact I really didnt need to use a moisturiser...smells nice...had no adverse reaction on my skin.I really liked it." **Linda C. Parafield Gardens SA**

"The Roseneath Organics toner / cleanser is fantastic. It is so easy to take along to over-nighters and for use when travelling as it works both as a cleanser and a toner. I like it as it even takes off heavy mascara." **Katherine, Adelaide**

"A two in one product that I have faith in ! Refresh compliments the wonderful Retinox !"

"...Never the fear of the lotion stinging on application or pulling your skin after use. So gentle and confident of using Refresh on my eyes without aggravating or blurring. The cucumber extract leaves your skin feeling cool and REFRESHED ! Since using Roseneath Cleanser/Toner.. my face doesnt cry out for moisture..I have my cleanser/toner in one bottle and no need to pack the bulky and expensive moisturiser..my facial pores appear small...Bliss !" **Tamara H. Gilberton SA**

Soft Face Wash

" Soft Face Wash... it's a fabulous product. It has a really unusual creamy, slippery kind of texture, which just seems to create a unique rapport with my skin. It cleans my face and doesn't leave it feeling dry or invaded. I have mature combination skin but the whole of my face feels beautifully balanced when I cleanse with it." **Julie A. Frenchs Forest NSW**

"The face cleanser is fantastic. It is packaged in a pump bottle which means it is easy to use in the

shower, bath or just over the basin. Using a small amount to wash my face every night has allowed my skin to obviously improve from years of acne. It has also reduced my oily complexion to make my skin look far healthier." **Katherine, Adelaide**

Scar Serum Oil

"I use your scar serum and nit formula on my children. We love your products." Dani

"...found it very pleasant to use. On the very new scars, healed but still red, the treated one lost redness decidedly more rapidly than the one not treated." **Dianne S. Daw Park SA**

Scar Serum Fruit

"For 6 years I have suffered from acne that has left me with deep tissue scarring on my face. Having tried all the latest scar remedies which produced no results I resorted to constantly hiding my scars under makeup. This was my sad situation before I discovered the Roseneath Organics range. For 4 months now I have been using the Roseneath Scar Serum (FRUIT) once a day on my facial scars and have noticed the lightening and blending in of my scars. This great result was achieved and sustained by me using the Roseneath Soft Face Wash before application of the (FRUIT) Scar Serum as the natural wash balanced the the pH levels of my skin to prevent any more acne. After switching to organic products my skin feels healthier inside and out and my skin tone now looks and feels more even." **Liliana F. Mitcham SA**

CoQ10 Under Moisturiser Mist

"For several months I have been using the spray bottle with the face spray in it. People have commented on my skin improvement many times. I feel it is improving. The other day I ran out of spray and had to wait for another delivery so I was without it for a few days and went back to some other product I had used before. When I was using this my face was very oily and felt unclean and not fresh like when I was using the spray. If you need to feel an improvement please go and try this range of top quality specialty items and I am sure you will be very happy with the results."

Reverend Ann W. Port Adelaide SA

Dream State Spray

"Love the insomnia spray. My little man off to sleep really well tonight. Thanks." **Lyndle C**

"Many thanks for your products. I am enjoying using and testing "Dream State" insomnia spray. I does seem to have a great effect." **K.Darcy – Adelaide SA**

"Thank you for sending the Dream State Spray to me. I am impressed with the product and I am sleeping a lot better." **Sheryl, Victoria**

Personal Products

Roseneath Personal Products are a collection of various products that have distinctly individual uses and applications.



Glide Personal Lubricant 125ml

What is it for and what does it do ?

Glide is for use during intercourse and other sexual activity, providing adequate lubrication when dryness is an issue.

Glide has a smooth texture and comfortable tactile feeling.

Glide has a yummy coco-vanilla flavor.

How do I use it ?

Simply apply Glide as and where required.

Does it have any distinctive features ?

Glide is an all natural product made using quality floral distillates, such

as Witch Hazel, a natural astringent, which helps tone and condition skin tissue.

Glide is made using real organic vanilla extract.

Glide does not contain any questionable preservatives and is Paraben Free

Glide is readily washable and will not permanently mark or stain clothing and/or linen.

Is there a Roseneath alternative to this product ?

No. This is the only lubricant product from Roseneath.

What other brands can I compare this product to ?

There are many other lubricants on the market.

Why would I buy this Roseneath product over the other brands ?

Glide is all natural, tastes nice and does not contain any artificial preservatives.

Glide is safe and human tissue compatible.

Are there any cautions I should be aware of when using this product ?

We are not aware of any cautions when using Glide. Glide will not protect against STDs and does not contain any spermicide. Thus it would be wise to use a condom or other protection when engaging in sexual activity.

Glide Personal Lubricant Contains ...

Rose Distillate Witch Hazel Distillate Vegetable Glycerine Water Organic Coconut Oil
Organic Jojoba Oil Organic Vanilla Bean Extract Guar Gum Sodium Hyaluronate Potassium Sorbate



Equine Shield Products

Equine Shield Products are a collection of various products tailored specifically to horses. All Equine Shield products have distinctly individual uses and applications. They have been designed to improve the general wellbeing of your animal and for dealing with common day to day issues that nearly every horse encounters.



Olive Horse Immuno Digestive Support 500ml

What is it for and what does it do ?

Olive Horse is for used to improve digestion and non-specific immune function in horses. Olive Horse also provides an increase in both available energy and stamina. The use of L-Lysine in Olive Horse improves general nutritional utilisation. Olive Horse has been found very beneficial for problems such as Founder / Laminitis. Most of the benefits of Olive Horse will generally become evident within two to three weeks.

Olive Leaf extracts can help reduce depression, anxiety and tension. Cats Claw aids with immune stimulation, anti-viral support and natural CoQ10. Echinacea has proven immuno-stimulating and anti-viral properties. Licorice root has been included for detoxification through digestive and liver support with unique anti-ulcer action. Ginger root has proven energy, anti-microbial, digestive and immune balancing properties. Lecithin is necessary for building healthy skin and hair. Citrus seed extract is a powerful anti-microbial and source of bio-flavonoids. L-Lysine helps with gut immune health and tissue repair.

How do I use it ?

Olive Horse can be applied directly into the mouth (syringed) as required or can be added to feed. Most animals require between 10 and 15ml daily. The maximum recommended dose is 25ml / day.

Does it have any distinctive features ?

Olive Horse combines beneficial proven herbal extracts together with olive leaf extracts. The use of ginger extract in Olive Horse increases natural serum testosterone, which generally results in improved performance, muscular capability and stamina. The licorice extract aids the olive leaf to gently detoxify the gut.

Is there a Roseneath alternative to this product ?

A horse owner could use Roseneath Double strength Olive Leaf Extract as an alternative. The double strength extract does not include the extra beneficial immuno-stimulating ingredients found in Olive Horse. The Double Strength product would work for digestive ailments. A higher dose of Double Strength Olive Leaf (20 – 30 ml) would be required. Use of the Double Strength extract will not necessarily result in increased performance and improved mindset.

What other brands can I compare this product to ?

We are not aware of any other olive leaf based supplements available for equine use.

Why would I buy this Roseneath product over the other brands ?

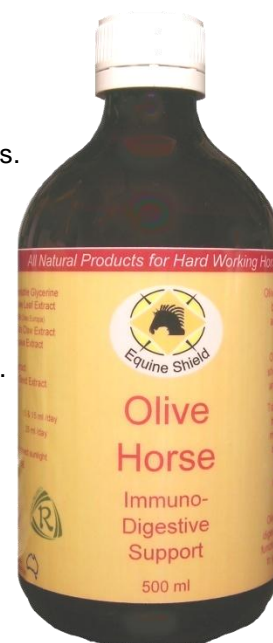
We are not aware of any other olive leaf based supplements available for equine use.

Are there any cautions I should be aware of when using this product ?

Do not continually overdose your horse with Olive Horse. This could lead to the animal performing beyond its physical capability. Continued overstress and above normal performance could result in tissue damage.

Olive Horse Immuno-Digestive Support Contains ...

Water Vegetable Glycerine Organic & Wildcrafted Olive Leaf Extract
Olive Leaf 8x Concentrate (Olea europa) Ethanol Raw Lecithin Cats Claw Extract
Organic Echinacea Purpurea Extract Vitamin C (Ascorbic Acid) Organic Licorice Root Extract
Ginger Oleoresin Citrus Seed Extract L-Lysine



Mobility Tissue Repair Supplement 100 & 500gm

What is it for and what does it do ?

Mobility Joint and Muscle Powder contains a variety of tissue repair, amino acid, anti-histamine and mineral components. Mobility has been formulated to improve the natural repair of soft tissue and hard tissue injuries.

Mobility has been specially formulated to promote rapid tissue and connective tendon repair, whilst actively reducing inflammation and joint pain.



- Glucosamine Hydrochloride and Glucosamine Sulphate both help to build strong joint cartilage.
- MSM (Methylsulfonylmethane) reduces tissue damage caused by exercise and/or oxidative stress.
- Spirulina Algae is rich in chlorophyll and contains complete amino acid protein, B group vitamins, essential fatty acids and minerals. Spirulina is an excellent nutritional input to ensure healthy bone development and digestive health.
- Quercetin is a natural plant bio-flavonoid that inhibits both the manufacture and release of histamine and other allergic/inflammatory mediators. Quercetin also exerts potent antioxidant activity and improves the utilisation of vitamin C.
- Coleus Forskohlii extract is a vasoactive agent that induces smooth muscle relaxation and inhibits the release of histamine and other undesirable inflammatory modulators. Through its vaso-dilation action Coleus improves coronary blood flow .
- Yucca extract contains natural anti-inflammatory, anti-spasmodic, steroidal pre-cursor compounds that act to reduce joint pain in arthritis and injury. The ingestion of Yucca extract has also been shown to improve both digestion and liver function.
- Boswellia extract inhibits joint pain, is anti-inflammatory and enhances blood supply to the injury site.
- Grape Seed Extract contains oligomeric pro-cyanadins that inhibit blood platelet aggregation, reduce inflammation and accelerate healing.
- Olive Leaf extract is a well known non-specific immune enhancer. In addition to improving non-specific immunity Olive Leaf has been shown to improve energy levels, improve sugar metabolism and to reduce the risk of contracting viral and bacterial based disease.
- Carnitine Tartrate is intimately involved in transferring fatty acids across the mitochondrial membrane. It maximises ATP production in heart tissue, improves fat metabolism and helps reduce fatigue and tiredness. Any increase in ATP production means higher effective cellular energy and better muscular performance.
- I-Proline is a major building block for connective tissue proteins including collagen and elastin. I-Proline is essential to the development and maintenance of healthy skin and connective tissues, especially at the site of traumatic tissue injury. I-Proline helps prevent muscle loss through over-activity. I-Proline strengthens joints, tendons, connective tissue, and cartilage .
- I-Lysine is a major amino acid and is an essential synergistic nutrient for all proteins in the body. I-Lysine is fundamental to calcium absorption; building muscle protein; recovery from surgery or sports injuries; and for the production of hormones, enzymes, and antibodies.
- I-Cysteine is a precursor to the liver detoxifying and antioxidant amino acid glutathione. I-Cysteine is fundamentally important in the production of collagen for optimal tissue elasticity and structure.
- I-Glycine supplies additional creatine to muscles. Glycine is also used to construct DNA and RNA. It helps to improve cellular energy.
- I-Arginine plays an important role in cell division, the healing of wounds, removing ammonia from the body, improving immune function, and the release of hormones. I-Arginine supplementation reduces the healing time of injuries (particularly bone), hastens repair of damaged tissue, increases muscle mass and stimulates the release of growth hormone.
- Natural Vitamin C (Ascorbic Acid) has many documented therapeutic uses and is vital for the correct utilisation of many other nutrients.
- Turmeric root is a known antioxidant, anti-inflammatory and anti-carcinogenic. Turmeric is known to improve liver function and to facilitate better digestion. Turmeric has been shown to inhibit blood platelet aggregation, reduce inflammation and to accelerate healing.
- Citrus bio-flavonoids function synergistically with Vitamin C in maintaining healthy capillaries, assisting collagen formation in connective tissue, accelerating wound healing and supporting a healthy immune system.
- I-Phenylalanine works to improve kidney function and maintain healthy weight, I-Phenylalanine is also a mood enhancer and will help your horse to keep a more positive performance attitude during competition.

- I-Histidine has an anti-histamine/anti-inflammatory effect. It works to improve red blood cell counts for better oxygen carrying capacity. It is a mood stabiliser, helps to reduce anxiety, aids hypertension, and aids in the removal of heavy metals.
- I-Methionine is anti-oxidant and improves kidney/liver function. It is intimately involved in the synthesis of adrenaline, antibodies, other amino acids and collagen. It is taken therapeutically for liver dysfunction, arthritis, detoxification and muscular fatigue.
- I-Tyrosine acts to balance blood pressure, improve immunity, improve mental endurance, improve muscular function, reduce risk of heart attack. It also works to overcome adrenal exhaustion in times of high stress and physical activity.
- Calcium, Magnesium, Zinc and Potassium Citrate are also included into Mobility at high levels. Mineral citrates are amongst the most bio-available forms of mineral supplementation. They all play a part in metabolic regulation and the development of strong bone.

How do I use it ?

Mobility powder is generally added to your animal's feed or can be combined with molasses to provide a tasty and beneficial treat. Most animals require between 5 and 10 gm daily. The maximum recommended dose is 15 gm / day.

Does it have any distinctive features ?

Mobility includes powerful antihistamine agents like quercetin and coleus forskohlii extract to rapidly decrease histamine production. These ingredients combined with anti-inflammatory agents such as MSM and glucosamine result in superior tissue repair with less long term damage due to inflammation and swelling. Customers report back to us that Mobility powder provides for significant relief of discomfort in at least half the time it would take should they choose to use just a simple glucosamine or MSM based product.

Is there a Roseneath alternative to this product ?

No. Currently this is our only product of its kind.

What other brands can I compare this product to ?

There are many equine supplements available on the market.

Why would I buy this Roseneath product over the other brands ?

Mobility is made using full strength ingredients. It is a concentrated supplement and provides excellent value. Mobility contains a good balance of immuno-stimulating, tissue repair and anti-inflammatory ingredients. All of the ingredients found in Mobility are human grade and are pure. It does not contain any hidden excipients to bulk up the product and to make it appear better value.

Are there any cautions I should be aware of when using this product ?

Some of the ingredients in Mobility are not recommended for use as supplements on horses with melanoma or those receiving MAO inhibitors.

Mobility Tissue Repair Supplement Contains ...

MSM Glucosamine Sulphate Glucosamine Hydrochloride Spirulina Algae Yucca Extract Quercetin
 Carnitine Tartrate I-Proline I-Lysine Boswellia Extract I-Cysteine Glycine I-Arginine
 Vitamin C (Ascorbic Acid) Calcium Citrate Magnesium Citrate Zinc Citrate Potassium Citrate
 Coleus Forskohli Extract Grape Seed Extract Olive Leaf 10:1 Turmeric Extract Citrus bio-flavonoids
 I-Phenylalanine I-Histidine I-Methionine I-Tyrosine

Analgesic Wound Gel 125ml

What is it for and what does it do ?

Analgesic Wound Gel is anti-bacterial, pain relieving, wound healing and insect repellent. Analgesic Wound Gel has been formulated with ingredients that effectively treat and rapidly disinfect fresh wounds. Wound Gel contains natural clays and mineral salts that encourage superior tissue repair whilst sealing the wound. Analgesic Wound Gel also contains ellagic acid which is a well known and safe natural blood coagulating agent. Use of the Gel will not stop all bleeding instantly but will work to minimize the time required for clotting of the fluids in the wound area. Wound Gel has an astringent action and encourages rapid cell granulation. These properties significantly improve tissue re-growth in wounds. Wound Gel contains essential oils to alleviate nerve pain and to repel flies and insects from the wound site.

How do I use it ?

Cleanse the wound using clean water so as to remove any foreign matter. It may be necessary to use a damp cloth compress in order to halt bad bleeds. Simply squeeze some wound gel from the tube straight onto the affected Area. There is no need to spread with your finger. It is, in fact, better to cover the wound with the gel and to let sit. The wound area should be cleaned of residue using sea salt in water after a couple of days and should it be necessary then re-apply the wound gel. It is not generally required that a wound dressing be applied over the top of the gel as the gel itself will encourage wound granulation and the subsequent formation of a suitable flexible scab.

Does it have any distinctive features ?

Analgesic Wound Gel provides for all facets of wound repair including fly repellency.

Is there a Roseneath alternative to this product ?

No. Currently this is our only product of its kind.

What other brands can I compare this product to ?

We are not aware of other similar products that are available in the equine market.

Why would I buy this Roseneath product over the other brands ?

Because it is natural and it works.

Are there any cautions I should be aware of when using this product ?

Some horses (chestnuts for example) may be more prone to allergic reactions. In such it pays to use caution when using the wound gel over an extended period. We would recommend checking for irritation should the gel be applied for more than a few days.

When cleansing an open wound that is bleeding it is NOT recommended that hydrogen peroxide be used to disinfect the wound as this will dissolve the clot and can result in uncontrollable bleeding.

Analgesic Wound Gel Contains ...

Water Ethanol Castor Oil Xanthan Gum Clove Oil Ellagic Acid Australian Green Clay
Organic Citronella Oil Peppermint Menthol Thymol Alum Potassium Permanganate



Equine Shield Product Testimonials

Mobility Powder

"I have used the 'Mobility' powder on several horses with great benefit to soundness and strength. My 17 year old QH Stallion has had long standing soundness issues in his front shoulder and foot. I believe the addition of the Mobility powder has been the missing link to him achieving soundness. He runs up and down hill never missing a beat." **Sarah K, (Breeder and trainer)**

"I had my horse on the Equine Shield Mobility Tissue Repair Performance Supplement as he has an ongoing Sacrum / Stifle problem which is greatly helped by this supplement in conjunction with my treatments... I always recommended Roseneath product for people and horses and shall continue to do so" **Mandy C, Tas**

"I would like to praise [Roseneath] Mobility powder for helping my 10yr old Jack Russell-cross, Nelson. I had noticed a stiffness in his walking, as if trying to support soreness. I noticed an improvement within 2 weeks of starting on the powder and the change has been dramatic after 5 weeks. His gait is much looser and he does not seem to be in pain. I would highly recommend Mobility powder for any dog with mobility issues." **Margaret C, S.A.**

We even have human customers choosing to use Mobility Powder!

"My general wellbeing has also improved since I started on the equine mobility product. I have no hesitation in recommending your products. Thank you" **Inge**

"My name is Angela Trevor and I have owned and operated Wilsons Organics in Adelaide city for about 14years. It is a busy and high turnover business requiring long hours and much physical work. I have never been shy of hard work and have always fully and actively involved in all aspects of Wilsons' operations. In Jan 2009, myself, my boyfriend Geoffrey, a team of tradespeople and a small group of staff and family worked like slaves for 2 weeks to double the store size and refit to include not just a bigger grocery shop but also a cafe and lunch bar. The work included knocking down walls, plastering, painting, building shelves and counters and moving fridges and displays. A huge job in 2 weeks! We knocked the last nail in on sunday at about 8pm and opened at 8am the next day.

In March 2009 I experienced extreme neck pain which fairly rapidly restricted my sleep to just a few hours at a time, limited my sitting time to a few minutes, made driving almost impossible and virtually rendered me unable to carry out basic work tasks. Just lifting my hand to my face produced sharp pain. I could only lie down for a few minutes before my arms would go completely dead. A short sleep would mean I wake with extremely painful pins and needles. I couldn't take time off. I was in big trouble. I was angry and frustrated, and my staff were desperately trying to put up with me. I went to a reputable chiropractor who refused to touch me until I had prescription-strength anti-inflammatories and a CT scan. The diagnosis was 2 inflamed disks in my neck, which needed to be verified, but threatened to finish my career in fruit and vegetables! The anti-inflammatories prescribed by a doctor came with frightening warnings, and the CT scan was possibly THE most painful 3.5 minutes of my life. The scans confirmed the worst. The prognosis being a long (and expensive) treatment period followed by a life of light duties. I definately considered the prospect of selling my business and considering alternatives. Clearly the shop makeover in Jan had taken its toll.

I got the drugs but was very uncomfortable about taking them. However, the lack of sleep was proving to be a serious problem. I took one only before speaking to Adam about my predicament. I had no idea he could help but he suggested that his "Mobility Tissue repair" powder may be worth a try. I couldn't get it quick enough. I collected the powder from Adam on the sunday. One teaspoon per day. By the wednesday I had my 1st nights sleep for about 2 months. My chiro was able to begin treatment (albeit gently) within a week. I was seeing the chiro 3 times a week for

about 6 weeks then cut back to once a week. I continued to take the powder daily for at least 2 months. My chiro felt like we were making exceptional progress in a relatively short time. I stayed on light duties for a number of months but slowly increased my work load.

I have now been back working my usual workload. Some of my newer staff have no idea of what transpired as there is no evidence of my injury. I see the chiro about every 3 weeks. He advised me about 2 months ago that if I continue with my current rate of progress I will be back to "normal" with in 12-18 months.

Apart from taking one single tablet of conventional anti-inflammatories, I have taken no other drugs (aside from painkillers from time to time). There is no doubt in my mind that the Roseneath powder has been my saviour. I still take it every 2 - 3 days for general health maintainance and insurance that I don't re-injure. It may still be another 12 months before I am fully recovered but there is little evidence of injury apart from slight and occasional stiffness.

It has been an extremely difficult year not only physically but also emotionally. Doubling the shop size (and the costs!) has been a huge undertaking in itself without the prospect of having to throw it all in because of an injury. I honestly don't know what I would have done without Adam's help."

Angela T, Director, Wilsons Organics, Adelaide SA

Olive Horse

Analgesic Wound Gel



BEFORE

AFTER

"I have been testing this product (Analgesic Wound Gel) for a month now with an excellent result. Fantasy has inherited her mum's deep heel bulbs that had become infected with thrush/canker and I'd tried many different treatments (Manuka Honey, Tea Tree Oil, Calendula, Hypericum and more) with no success. It was ugly with pus.

The heel bulbs had a cleft that was over 2cm deep on her worst hoof and less on the others. After cleaning... I applied the Wound Gel daily for the first week then every second day for the next 3 weeks... the results were a nice clean heel. And best of all, it has stayed thrush/canker free ever since, despite all the wet weat her and mud we now have." **Cynthia C, Tas.**

